

# PERSONS NOT IN THE LABOUR FORCE

AUSTRALIA

EMBARGO: 11:30AM (CANBERRA TIME) WED 24 FEB 1999

## CONTENTS

	page
Notes . . . . .	2
Conceptual framework . . . . .	3
Summary of findings . . . . .	5
TABLES	
List of tables . . . . .	9
Civilian population . . . . .	10
Persons not in the labour force . . . . .	11
With marginal attachment . . . . .	17
Discouraged jobseekers . . . . .	21
For childcare reasons . . . . .	23
Previously had a job . . . . .	24
Populations . . . . .	27
ADDITIONAL INFORMATION	
Explanatory notes . . . . .	30
Appendix: Populations and data items list. . . . .	33
Technical notes . . . . .	38
Glossary . . . . .	41
Publications containing results of Supplementary Surveys . . . . .	45

- For further information about these and related statistics, contact Tim Wardrop on Canberra 02 6252 7204, facsimile 02 6252 7784, or any ABS office shown on the back cover of this publication.

## NOTES

### ABOUT THIS PUBLICATION

This publication presents information about persons who are not in the labour force: that is, neither employed nor unemployed. The data measure the potential supply of labour not reflected in employment and unemployment statistics.

Many people not in the labour force can be considered strongly attached to the labour force. They would like to work, but for a variety of reasons are not actively looking for work or are not currently available to start a job. There is an expectation that many of these people will move into the labour force in the short term, or could do so if labour market conditions improved.

The conceptual framework which follows separates persons not in the labour force into more detailed categories, depending on the strength of their attachment to the labour force.

Statistics in this publication were obtained from the Persons Not in the Labour Force Survey, conducted throughout Australia in September 1998 as a supplement to the Australian Bureau of Statistics monthly Labour Force Survey.

Data relate to persons aged 15–69 years who were not in the labour force. Respondents were asked whether they wanted to work, about reasons why they were not actively looking for work, about their availability for work, and about their main activity while not in the labour force.

### SYMBOLS AND OTHER USAGES

ABS	Australian Bureau of Statistics
LFS	Labour Force Survey
n.a.	not available
RSE	Relative Standard Error
SE	Standard Error
*	subject to sampling variability too high for most practical uses
. .	not applicable

As estimates have been rounded, discrepancies may occur between sums of the component items and totals.

### STATE INQUIRIES

For State office contact numbers see the Supplementary Surveys list in the back of this publication.

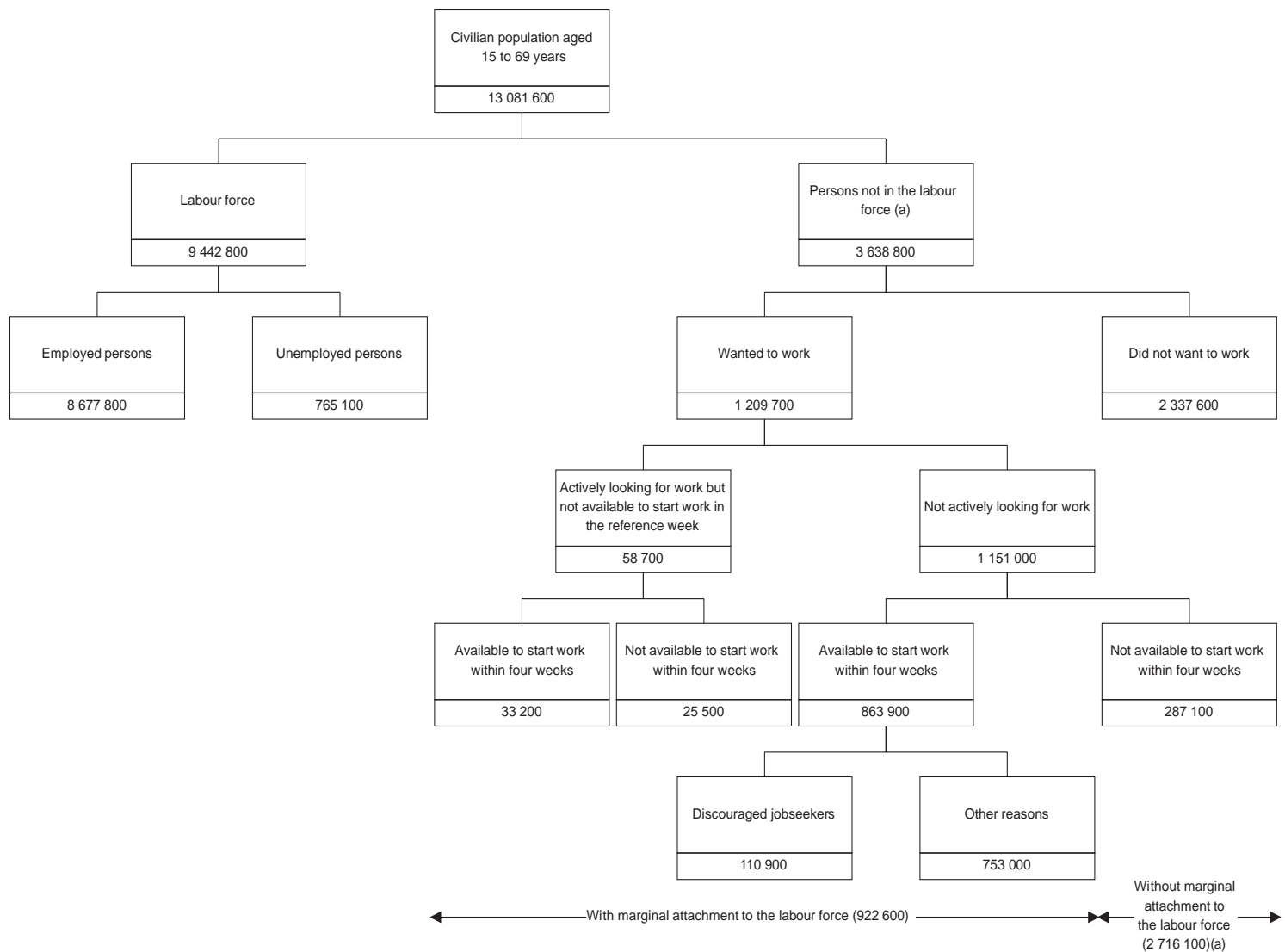
D. J. Trewin  
Acting Australian Statistician

## PERSONS NOT IN THE LABOUR FORCE: CONCEPTUAL FRAMEWORK

The civilian population can be split into two mutually exclusive groups: the labour force (employed and unemployed persons) and persons not in the labour force.

Marginal attachment is determined by firstly establishing whether a person not in the labour force has a desire to work, and then by whether they have been actively seeking work or are available to start work within a short period of time.

Persons who are marginally attached may satisfy some, but not all, of the criteria required to be classified as unemployed.



(a) Includes 91 400 persons who were permanently unable to work

Persons not in the labour force are considered to be marginally attached to the labour force if they:

- want to work and are actively looking for work but not available to start work in the reference week; or
- want to work and are not actively looking for work but available to start work within four weeks.

Persons not in the labour force are not marginally attached if they:

- do not want to work; or
- want to work but are not actively looking and not available to start work within four weeks.

## SUMMARY OF FINDINGS

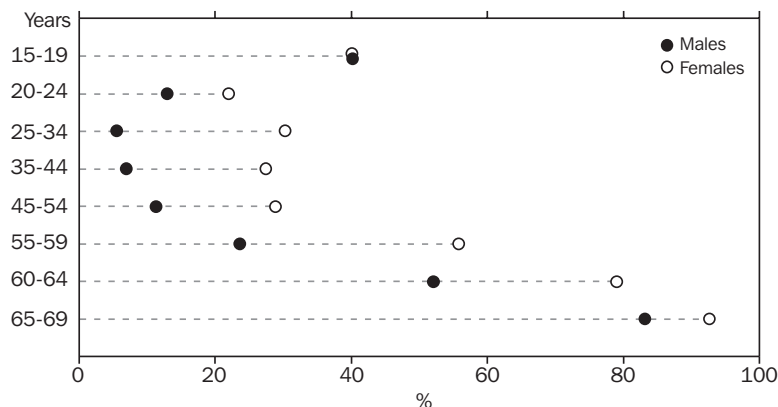
### OVERVIEW

In September 1998, there were 3,638,800 persons aged 15-69 years who were not in the labour force. This represented 28% of the civilian population in this age group. Of those not in the labour force, two-thirds were female.

The number of persons not in the labour force decreased by 2% since 1997. This is the first decrease in the number of persons not in the labour force since September 1994. In contrast, the number of persons with marginal attachment increased to its highest level recorded since the survey began in 1975.

The proportion of persons not in the labour force generally rises with age. The exceptions are the 15–24 years age group, where high levels of educational participation are present, and females during their main child-bearing years (25–34).

PERSONS NOT IN THE LABOUR FORCE, BY AGE



There were more females than males not in the labour force in all age groups except the 15–19 years group where the proportion for both sexes was almost identical. The proportion of females not in the labour force ranged from 22% for the 20–24 years age group to 93% for the 65–69 years age group.

### MARGINAL ATTACHMENT

Of the 922,600 persons marginally attached to the labour force in September 1998, 94% were not actively looking for work but were available to start work within four weeks. The remainder were actively looking for work but not available to start work in the reference week.

Some 27% of females and 23% of males not in the labour force were marginally attached. The proportion with marginal attachment has increased for both males and females (by 2 and 1 percentage points, respectively) since September 1997.

Of males marginally attached to the labour force, 63% intended to enter the labour force in the next 12 months, while 19% did not. The remaining 18% were unsure. For females in this group, 49% intended to enter the labour force in the next 12 months, 28% did not intend to, and 23% were not sure.

MARGINAL ATTACHMENT  
*continued*

Two-thirds of females marginally attached to the labour force would have preferred part-time work, while only 17% preferred full-time work. Males in this group were more evenly distributed, with 44% preferring part-time and 38% preferring full-time work.

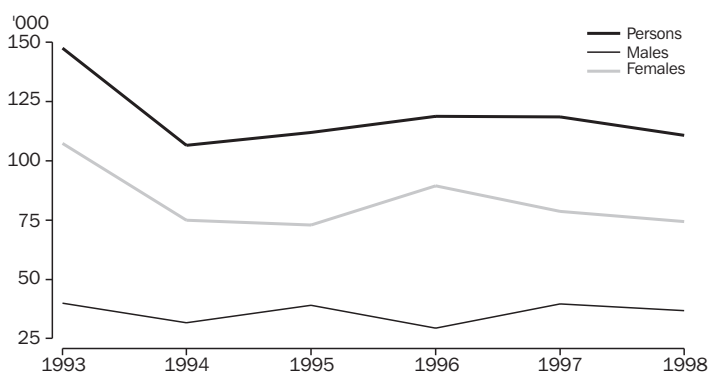
Main reason for not  
actively looking for work

The main reasons for not actively looking for work most commonly reported by males were 'attending an educational institution' (35%) and 'own ill health or physical disability' (16%). The most commonly reported main reasons for females were 'childcare' (31%) and 'attending an educational institution' (14%).

Discouraged jobseekers

At September 1998 the number of discouraged jobseekers was an estimated 110,900, a 6% decrease since September 1997. This is the first time since September 1994 that a fall had occurred. An estimated 61% of all discouraged jobseekers reported that they might enter, or intended to enter, the labour force in the next 12 months.

DISCOURAGED JOBSEEKERS, AS AT SEPTEMBER



Females made up two-thirds of all discouraged jobseekers. Almost two-thirds of these females were aged 35–59 years. Male discouraged jobseekers tended to be older, with 65% aged 55–69 years.

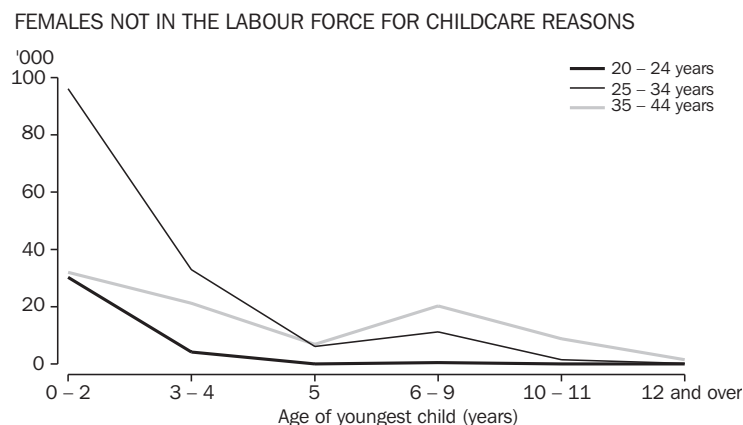
The ratio of discouraged jobseekers to the number of persons unemployed was 8% for males and 23% for females, almost unchanged from September 1997. For males in the last 10 years, this series peaked in 1995 and 1997 (both 8%) and was lowest in 1996 (6%). Females in the same period have shown greater fluctuation, peaking in 1991 and 1992 (both 30%) before falling to 22% in 1994.

The main reasons for not actively looking for work reported by discouraged jobseekers were 'considered too young or too old by employers' (37%) and 'no jobs in locality or line of work' (27%).

Persons not in the labour force for childcare reasons

An estimated 300,400 persons wanted to work but were not in the labour force for childcare reasons. Some 96% were female – 4% of all females in the civilian population aged 15–69 years. Just over half (51%) of these females were aged 25–34 years. A further 31% were aged 35–44 years.

Of females not in the labour force for childcare reasons, 57% reported the age of their youngest child as 0–2 years and 25% reported 3–5 years.



PERSONS WITHOUT MARGINAL ATTACHMENT

There were 2,716,100 persons who were not in the labour force and did not have marginal attachment to the labour force. Of these, 287,100 (11%) wanted to work but were neither actively looking for work nor available to start work within four weeks. Two-thirds of this group were female, with 42% reporting that their main activity was ‘home duties or childcare’, and 26% reporting that they had a job less than 12 months ago.

Most of these people (86% or 2,337,600) did not want to work. A further 3% were permanently unable to work.

MAIN ACTIVITY WHEN NOT IN THE LABOUR FORCE

The most commonly reported main activities of persons not in the labour force were ‘home duties or childcare’ (43%), ‘attending an educational institution’ (20%) and ‘retired or voluntarily inactive’ (18%).

The most commonly reported activity of males aged 15–34 years was ‘attending an educational institution’ (80%). For males aged 35–59 years, the most commonly reported activity was ‘own illness or injury’ (36%), while for older males (aged 60–69 years) the most common response was ‘retired or voluntarily inactive’ (69%).

In comparison, for females the most common activity was ‘home duties or childcare’ for age groups covering 20 to 69 years, ranging from 48% of those aged 65–69 years to 88% of those aged 25–34 years. Females aged 15–19 years most commonly reported ‘attending an educational institution’ (91%).

MAIN SOURCE OF INCOME	<p>Government benefits or cash pensions were the main source of income for half of the people not in the labour force. Another 38% of persons reported having no income or relying on someone else's income. Although 66% of those not in the labour force were female, they accounted for 77% of persons reporting 'nil or someone else's income'.</p> <p>Half the persons who were marginally attached to the labour force reported that they had no income or relied on someone else's income. A further 23% reported that 'age, disability, sole parent's or widow's pension' was their main source of income, and 8% reported 'other government pensions or cash benefits' as their main source. In comparison, 53% of those without marginal attachment to the labour force reported that a government pension or cash benefit was their main source of income, and a further 34% reported that they had no income or relied on someone else's income.</p>
PREVIOUS JOB	<p>An estimated 2,985,400 persons (82%) who were not in the labour force had previously had a job.</p> <p>For males in this group, more than half (55%) were job losers. In contrast, nearly three-quarters of females in this group reported that they left their last job voluntarily.</p> <p>The most common reasons given for males ceasing their last job were their own ill health or injury (31%), retirement or not wanting to work any longer (20%), and retrenchment (19%). The most common reasons females gave for ceasing their last job were pregnancy or to have children (26%), retirement or not wanting to work any longer (14%), and own ill health or injury (10%).</p> <p>Of all persons not in the labour force who had previously had a job, only 11% had looked for work in the previous 12 months.</p>



## LIST OF TABLES

		Page
CIVILIAN POPULATION	<b>1</b> Labour force status, September 1993 to September 1998	10
PERSONS NOT IN THE LABOUR FORCE	<b>2</b> With and without marginal attachment	11
	<b>3</b> Main source of income	14
	<b>4</b> Main activity, by age	16
With marginal attachment	<b>5</b> Main reason for not actively looking for work, September 1993 to September 1998	17
	<b>6</b> Main reason for not actively looking for work, intention to enter the labour force in the next 12 months and preference for full-time or part-time work	19
Discouraged jobseekers	<b>7</b> Selected characteristics, September 1993 to September 1998	21
For childcare reasons	<b>8</b> Persons wanting to work but not actively looking for work	23
Previously had a job	<b>9</b> Characteristics of last job and whether looked for work in the last 12 months	24
POPULATIONS	<b>10</b> State or Territory of usual residence	27

# 1. CIVILIAN POPULATION: LABOUR FORCE STATUS

	Sep 1993	Sep 1994	Sep 1995	Sep 1996	Sep 1997	Sep 1998
MALES						
— '000 —						
Civilian population aged 15 to 69 years —	6,243.3	6,219.3	6,330.6	6,414.7	6,456.8	6,563.3
Persons in the labour force	5,049.5	5,057.5	5,164.0	5,212.2	5,217.6	5,333.9
Employed	4,483.7	4,573.3	4,700.3	4,746.7	4,748.2	4,888.8
Unemployed	565.8	484.2	463.7	465.5	469.4	445.1
Persons not in the labour force	1,193.8	1,161.7	1,166.6	1,202.5	1,239.2	1,229.4
With marginal attachment to the labour force	247.1	215.3	261.8	262.0	259.5	282.3
Wanted to work and were actively looking for work	28.1	25.1	30.9	28.6	24.4	27.8
Were available to start work within four weeks	16.3	15.1	13.7	15.8	14.6	12.6
Were not available to start work within four weeks	11.8	10.0	17.3	12.8	9.8	15.2
Wanted to work but were not actively looking for work and were available to start work within four weeks	219.0	190.2	230.9	233.3	235.1	254.5
Discouraged jobseekers	40.0	31.7	39.0	29.5	39.7	36.7
Other	179.0	158.5	191.9	203.9	195.4	217.8
Without marginal attachment to the labour force(b)	946.7	946.4	904.8	940.5	979.7	947.2
Wanted to work but were not actively looking for work and were not available to start work within four weeks	98.6	100.7	95.0	92.4	101.1	95.6
Did not want to work	813.1	787.6	768.6	784.2	819.7	789.0
FEMALES						
— '000 —						
Civilian population aged 15 to 69 years —	6,178.8	6,219.2	6,292.8	6,383.8	6,462.7	6,518.2
Persons in the labour force	3,695.1	3,818.0	3,893.0	3,970.9	4,007.8	4,108.9
Employed	3,321.3	3,471.4	3,593.4	3,636.4	3,684.5	3,788.9
Unemployed	373.8	346.5	299.6	334.5	323.3	320.0
Persons not in the labour force	2,483.7	2,401.3	2,399.8	2,412.9	2,454.9	2,409.3
With marginal attachment to the labour force	660.7	558.0	601.0	617.6	630.9	640.4
Wanted to work and were actively looking for work	30.2	36.2	32.9	29.4	28.9	31.0
Were available to start work within four weeks	18.5	23.3	19.1	18.9	21.1	20.6
Were not available to start work within four weeks	11.7	13.0	13.7	10.5	7.8	10.3
Wanted to work but were not actively looking for work and were available to start work within four weeks	630.4	521.8	568.1	588.2	602.0	609.4
Discouraged jobseekers	107.4	74.8	72.9	89.4	78.7	74.3
Other	523.1	447.0	495.2	498.8	523.4	535.1
Without marginal attachment to the labour force(b)	1,823.1	1,843.2	1,798.8	1,795.3	1,824.0	1,769.0
Wanted to work but were not actively looking for work and were not available to start work within four weeks	172.4	188.8	205.7	216.0	197.6	191.5
Did not want to work	1,636.6	1,622.3	1,573.5	1,544.5	1,595.6	1,548.7
PERSONS						
— '000 —						
Civilian population aged 15 to 69 years —	12,422.1	12,438.5	12,623.3	12,798.5	12,919.6	13,081.6
Persons in the labour force	8,744.6	8,875.5	9,057.0	9,183.1	9,225.4	9,442.8
Employed	7,804.9	8,044.7	8,293.7	8,383.1	8,432.8	8,677.8
Unemployed	939.6	830.8	763.3	800.0	792.6	765.1
Persons not in the labour force	3,677.5	3,563.0	3,566.3	3,615.4	3,694.2	3,638.8
With marginal attachment to the labour force	907.8	773.3	862.8	879.6	890.5	922.6
Wanted to work and were actively looking for work	58.3	61.4	63.8	58.0	53.3	58.7
Were available to start work within four weeks	34.8	38.4	32.8	34.7	35.7	33.2
Were not available to start work within four weeks	23.5	22.9	31.0	23.3	17.6	25.5
Wanted to work but were not actively looking for work and were available to start work within four weeks	849.5	712.0	799.0	821.5	837.2	863.9
Discouraged jobseekers	147.4	106.5	111.9	118.9	118.4	110.9
Other	702.0	605.5	687.1	702.6	718.7	753.0
Without marginal attachment to the labour force(a)	2,769.8	2,789.7	2,703.5	2,735.8	2,803.7	2,716.1
Wanted to work but were not actively looking for work and were not available to start work within four weeks	271.0	289.6	300.7	308.4	298.7	287.1
Did not want to work	2,449.7	2,409.9	2,342.1	2,328.7	2,415.4	2,337.6

(a) Includes persons who were permanently unable to work.

## 2. PERSONS NOT IN THE LABOUR FORCE WITH AND WITHOUT MARGINAL ATTACHMENT

	With marginal attachment to the labour force				Without marginal attachment to the labour force				Total not in the labour force	Proportion not in the labour force	
Wanted to work and were actively looking for work	Wanted to work but were not actively looking for work and were available to start work within four weeks			Total	Wanted to work but neither looking nor available for work	Did not want to work	Total(a)				
	Dis-couraged jobseekers	Other	Total								
MALES											
	— '000 —										%
State or Territory of usual residence —											
New South Wales	9.0	12.2	69.3	81.5	90.4	35.8	271.7	344.7	435.1	19.8	
Victoria	* 5.5	10.0	50.1	60.1	65.7	24.8	198.2	237.4	303.1	18.6	
Queensland	6.4	6.5	44.4	50.9	57.2	16.2	139.5	157.3	214.5	17.7	
South Australia	* 2.2	* 2.5	18.9	21.4	23.6	8.2	73.8	85.1	108.7	20.9	
Western Australia	* 2.9	4.1	22.8	26.9	29.8	5.6	68.2	74.8	104.6	16.2	
Tasmania	* 0.7	* 0.6	6.6	7.2	7.9	3.2	25.1	31.9	39.9	24.5	
Northern Territory	* 0.2	* 0.2	* 0.9	* 1.1	* 1.3	* 0.2	* 2.4	3.6	4.9	9.7	
Australian Capital Territory	* 0.8	* 0.6	4.9	5.4	6.3	1.5	10.0	12.3	18.6	17.1	
Age group (years) —											
15-19	8.4	* 2.7	91.5	94.1	102.6	22.7	135.8	160.6	263.2	40.2	
20-24	6.1	* 1.6	21.6	23.2	29.3	11.6	44.8	58.1	87.4	12.9	
25-34	* 3.7	* 1.8	21.2	23.0	26.7	15.2	34.0	52.4	79.1	5.6	
35-44	* 4.4	* 4.2	22.0	26.2	30.6	17.0	43.0	68.6	99.2	7.0	
45-54	* 2.7	* 2.8	23.7	26.4	29.2	13.5	76.4	110.6	139.8	11.3	
55-59	* 1.5	* 5.1	15.8	20.9	22.4	7.3	66.4	82.6	105.0	23.6	
60-64	* 0.8	8.3	13.9	22.2	23.0	* 4.9	152.3	167.9	190.9	52.1	
65-69	* 0.0	10.3	8.2	18.4	18.4	* 3.3	236.3	246.5	264.9	83.1	
Relationship in household —											
Family member	19.6	31.2	168.6	199.9	219.5	74.0	637.5	762.5	982.0	18.7	
Husband	* 4.9	25.3	57.3	82.6	87.4	40.4	438.6	516.6	604.1	15.9	
With dependants	* 3.8	7.7	27.0	34.7	38.5	21.6	69.4	101.2	139.7	6.8	
Without dependants	* 1.0	17.6	30.4	47.9	48.9	18.8	369.2	415.5	464.4	26.6	
Lone parent	* 1.1	* 0.0	7.4	7.4	8.5	* 3.7	9.0	13.6	22.1	26.1	
With dependants	* 1.1	* 0.0	6.8	6.8	7.9	* 3.4	* 5.4	8.9	16.8	28.8	
Without dependants	* 0.0	* 0.0	* 0.6	* 0.6	* 0.6	* 0.2	* 3.6	* 4.8	* 5.3	* 20.0	
Dependent student	8.5	* 1.8	83.0	84.8	93.3	21.6	140.7	163.1	256.3	55.9	
Non-dependent child	* 4.2	* 3.7	15.2	18.9	23.1	* 4.5	28.8	42.7	65.7	8.5	
Other family person	* 1.0	* 0.5	5.7	6.3	7.3	* 3.9	20.4	26.5	33.8	25.9	
Non-family member	* 5.5	* 4.8	34.9	39.7	45.2	15.8	113.9	139.3	184.4	17.5	
Lone person	* 2.2	* 4.0	20.1	24.1	26.3	10.0	77.1	94.7	121.0	20.4	
Not living alone	* 3.3	* 0.8	14.7	15.6	18.9	5.7	36.8	44.5	63.4	13.7	
Not determined	* 2.7	* 0.6	14.3	14.9	17.6	5.8	37.6	45.4	63.0	26.9	
Birthplace —											
Born in Australia	20.7	20.8	167.5	188.3	209.0	65.8	507.2	618.9	828.0	17.4	
Born outside Australia	7.0	15.9	50.3	66.2	73.2	29.8	281.7	328.2	401.5	22.6	
Born in main English-speaking countries	* 2.1	* 3.0	18.9	21.9	24.0	7.3	74.5	87.7	111.7	16.1	
Born in other countries	* 4.9	12.9	31.4	44.3	49.2	22.5	207.3	240.6	289.8	26.8	
Time since last job —											
Had a job	21.7	32.8	141.7	174.4	196.1	70.2	631.0	757.1	953.2	..	
Under 12 months	11.1	6.8	58.6	65.4	76.4	24.8	74.6	101.8	178.2	..	
1 and under 3 years	* 5.5	9.7	36.3	46.0	51.5	17.5	121.3	144.0	195.5	..	
3 and under 5 years	* 2.3	* 5.0	19.9	24.8	27.1	12.4	100.9	124.1	151.2	..	
5 and under 10 years	* 2.0	9.3	14.6	23.8	25.8	9.3	178.3	207.9	233.7	..	
10 and under 20 years	* 0.9	* 2.0	11.2	13.3	14.1	* 5.2	120.4	136.9	151.0	..	
20 years or more	* 0.0	* 0.0	* 1.1	* 1.1	* 1.1	* 1.0	35.5	42.4	43.5	..	
Never had a job	6.1	* 3.9	76.2	80.1	86.2	25.4	158.0	190.1	276.3	..	
Main activity —											
Home duties or childcare	* 1.7	* 4.9	22.6	27.4	29.2	* 4.8	41.4	46.5	75.7	..	
Attending an educational institution	14.2	* 5.1	110.2	115.3	129.6	40.1	195.2	236.1	365.7	..	
Retired or voluntarily inactive	* 0.3	17.7	17.1	34.8	35.1	* 5.1	331.6	343.2	378.2	..	
Own disability or handicap	* 0.3	* 1.5	7.9	9.4	9.7	6.4	50.4	81.5	91.2	..	
Own illness or injury	5.7	* 1.4	25.9	27.3	33.0	32.1	113.3	174.3	207.3	..	
Looking after ill or disabled person	* 0.1	* 0.0	* 2.3	* 2.3	* 2.4	* 2.8	10.1	13.8	16.2	..	
Travel, holiday or leisure activity	* 0.6	* 2.1	15.8	17.9	18.5	* 2.1	22.7	25.5	44.0	..	
Working in unpaid voluntary job	* 0.6	* 1.1	* 4.5	* 5.6	6.2	* 0.8	14.4	15.2	21.4	..	
Other	* 4.3	* 2.9	11.6	14.4	18.7	* 1.4	9.7	11.1	29.8	..	
Total	27.8	36.7	217.8	254.5	282.3	95.6	789.0	947.2	1,229.4	18.8	

2. PERSONS NOT IN THE LABOUR FORCE WITH AND WITHOUT MARGINAL ATTACHMENT—continued

	With marginal attachment to the labour force				Without marginal attachment to the labour force				Total not in the labour force	Proportion not in the labour force	
	Wanted to work and were actively looking for work	Wanted to work but were not actively looking for work and were available to start work within four weeks			Total	Wanted to work but neither looking nor available for work	Did not want to work	Total(a)			
		Discouraged jobseekers	Other	Total							
FEMALES											
	— '000 —										%
State or Territory of usual residence —											
New South Wales	9.4	25.9	168.3	194.2	203.6	61.9	558.2	634.6	838.3	38.1	
Victoria	* 6.2	16.8	133.1	149.8	156.0	50.4	379.9	438.4	594.4	36.4	
Queensland	7.5	13.7	107.3	121.0	128.5	37.1	274.1	312.4	440.9	36.7	
South Australia	* 2.5	7.9	43.9	51.8	54.3	15.5	132.7	150.2	204.6	39.8	
Western Australia	* 3.0	7.1	56.2	63.2	66.3	17.7	135.1	153.8	220.0	35.1	
Tasmania	* 1.0	2.2	16.5	18.7	19.7	5.3	41.4	48.3	68.0	42.2	
Northern Territory	* 0.7	* 0.3	* 1.9	* 2.3	* 2.9	* 1.0	6.9	8.0	10.9	22.6	
Australian Capital Territory	* 0.7	* 0.4	7.9	8.3	9.0	2.6	20.3	23.2	32.2	29.3	
Age group (years) —											
15-19	5.9	* 3.5	72.1	75.6	81.5	28.5	137.9	168.0	249.4	40.1	
20-24	* 5.5	* 1.7	52.1	53.8	59.3	18.9	66.3	85.9	145.2	22.0	
25-34	8.5	7.5	172.8	180.3	188.9	61.0	181.5	245.4	434.3	30.3	
35-44	7.1	18.3	135.1	153.4	160.5	46.1	183.0	232.8	393.4	27.4	
45-54	* 3.5	18.5	66.0	84.5	88.1	24.0	231.4	264.4	352.5	28.9	
55-59	* 0.4	12.2	18.9	31.1	31.5	6.0	197.9	207.8	239.4	55.7	
60-64	* 0.0	8.9	11.0	19.9	19.9	* 4.9	260.1	268.2	288.1	79.0	
65-69	* 0.0	* 3.6	7.1	10.7	10.7	* 2.1	290.5	296.3	307.0	92.6	
Relationship in household —											
Family member	24.7	62.3	485.0	547.4	572.1	164.2	1,297.0	1,483.1	2,055.2	38.0	
Wife	13.0	48.0	306.8	354.8	367.8	101.3	1,000.5	1,115.4	1,483.2	39.0	
With dependants	9.1	20.0	250.4	270.4	279.5	79.4	348.9	431.5	710.9	36.1	
Without dependants	* 4.0	27.9	56.5	84.4	88.4	21.8	651.6	684.0	772.3	42.2	
Lone parent	* 5.3	8.4	104.9	113.3	118.6	28.2	115.3	146.5	265.1	44.3	
With dependants	* 4.6	7.9	100.2	108.1	112.7	24.6	68.0	93.0	205.7	43.5	
Without dependants	* 0.7	* 0.5	* 4.7	* 5.2	5.9	* 3.7	47.3	53.4	59.4	47.3	
Dependent student	* 5.0	* 2.9	58.7	61.6	66.6	26.3	123.1	150.1	216.7	45.5	
Non-dependent child	* 0.6	* 0.4	8.0	8.3	9.0	6.3	23.7	33.4	42.4	10.0	
Other family person	* 0.8	* 2.7	6.7	9.4	10.1	* 2.2	34.5	37.7	47.8	42.5	
Non-family member	* 3.9	9.9	30.6	40.5	44.3	14.8	193.0	214.6	258.9	30.7	
Lone person	* 0.7	8.9	17.5	26.4	27.1	10.5	157.8	172.5	199.5	40.2	
Not living alone	* 3.2	* 1.0	13.1	14.1	17.2	* 4.2	35.2	42.1	59.3	17.1	
Not determined	* 2.4	* 2.1	19.5	21.6	23.9	12.4	58.7	71.3	95.2	39.9	
Birthplace —											
Born in Australia	24.3	43.1	386.4	429.5	453.8	129.9	1,043.5	1,194.4	1,648.2	34.6	
Born outside Australia	6.7	31.2	148.7	179.9	186.6	61.6	505.2	574.6	761.2	44.0	
Born in main English-speaking countries	* 3.8	9.0	52.9	61.8	65.6	17.1	149.7	168.4	234.0	36.3	
Born in other countries	* 3.0	22.2	95.9	118.0	121.0	44.4	355.5	406.2	527.2	48.5	
Time since last job —											
Had a job	25.5	65.2	453.6	518.8	544.2	156.2	1,311.2	1,488.0	2,032.2	..	
Under 12 months	14.5	8.4	105.5	113.9	128.4	50.4	139.6	190.5	318.9	..	
1 and under 3 years	* 4.6	12.4	108.9	121.4	126.0	34.0	179.3	214.8	340.8	..	
3 and under 5 years	* 3.0	8.5	63.7	72.2	75.2	19.5	127.0	147.4	222.6	..	
5 and under 10 years	* 1.7	12.3	89.2	101.5	103.2	27.0	243.2	276.3	379.5	..	
10 and under 20 years	* 1.3	13.7	59.0	72.8	74.0	18.5	247.8	271.5	345.5	..	
20 years or more	* 0.5	9.8	27.2	37.0	37.5	6.9	374.3	387.5	425.0	..	
Never had a job	* 5.5	9.1	81.5	90.7	96.1	35.2	237.5	281.0	377.1	..	
Main activity —											
Home duties or childcare	15.5	53.5	384.6	438.1	453.6	115.4	904.0	1,023.9	1,477.5	..	
Attending an educational institution	10.8	5.6	96.6	102.2	113.1	42.8	190.8	234.2	347.3	..	
Retired or voluntarily inactive	* 0.3	7.5	11.9	19.3	19.7	* 3.8	266.6	272.9	292.5	..	
Own disability or handicap	* 0.0	* 0.5	* 3.1	* 3.6	* 3.6	* 3.3	21.2	35.4	39.0	..	
Own illness or injury	* 1.5	* 0.6	17.0	17.6	19.1	14.7	57.1	81.6	100.7	..	
Looking after ill or disabled person	* 0.1	* 0.9	7.9	8.8	9.0	7.0	46.0	53.3	62.3	..	
Travel, holiday or leisure activity	* 0.3	* 0.5	7.1	7.6	7.9	* 2.9	25.5	28.4	36.3	..	
Working in unpaid voluntary job	* 0.1	* 3.8	* 4.2	7.9	8.0	* 1.0	30.0	31.0	39.0	..	
Other	* 2.3	* 1.5	* 2.7	* 4.2	6.5	* 0.6	7.5	8.3	14.7	..	
Total	31.0	74.3	535.1	609.4	640.4	191.5	1,548.7	1,769.0	2,409.3	37.1	

**2. PERSONS NOT IN THE LABOUR FORCE WITH AND WITHOUT MARGINAL ATTACHMENT—continued**

	With marginal attachment to the labour force				Without marginal attachment to the labour force				Total not in the labour force	Proportion not in the labour force	
	Wanted to work and were actively looking for work	Wanted to work but were not actively looking for work and were available to start work within four weeks	Dis-couraged jobseekers	Other	Total	Wanted to work but neither looking nor available for work	Did not want to work	Total(a)			
PERSONS											
	— '000 —										%
State or Territory of usual residence —											
New South Wales	18.4	38.1	237.6	275.7	294.1	97.7	829.9	979.3	1,273.4	28.9	
Victoria	11.7	26.8	183.1	209.9	221.7	75.2	578.2	675.8	897.5	27.5	
Queensland	13.9	20.1	151.7	171.9	185.7	53.3	413.6	469.7	655.5	27.2	
South Australia	4.7	10.4	62.8	73.2	77.9	23.7	206.5	235.4	313.3	30.3	
Western Australia	5.9	11.1	79.0	90.1	96.1	23.4	203.3	228.5	324.6	25.5	
Tasmania	* 1.7	2.8	23.1	25.9	27.6	8.5	66.6	80.2	107.9	33.3	
Northern Territory	* 0.9	* 0.5	* 2.8	* 3.4	4.3	* 1.2	9.3	11.6	15.9	15.9	
Australian Capital Territory	1.5	* 1.0	12.8	13.8	15.3	4.1	30.3	35.6	50.8	23.3	
Age group (years) —											
15-19	14.3	6.2	163.6	169.7	184.0	51.2	273.7	328.6	512.6	40.2	
20-24	11.6	* 3.3	73.7	77.0	88.6	30.5	111.1	144.0	232.6	17.4	
25-34	12.3	9.3	194.0	203.4	215.6	76.2	215.5	297.8	513.4	18.0	
35-44	11.5	22.5	157.2	179.6	191.2	63.1	226.1	301.4	492.6	17.3	
45-54	6.3	21.2	89.7	111.0	117.2	37.5	307.8	375.0	492.3	20.0	
55-59	* 1.9	17.3	34.7	52.0	53.9	13.3	264.3	290.4	344.3	39.3	
60-64	* 0.8	17.2	24.9	42.1	42.9	9.8	412.4	436.1	479.0	65.5	
65-69	* 0.0	13.9	15.2	29.2	29.2	* 5.5	526.8	542.8	571.9	87.9	
Relationship in household —											
Family member	44.4	93.6	653.7	747.3	791.6	238.3	1,934.5	2,245.6	3,037.3	28.5	
Husband or wife	17.9	73.2	364.2	437.4	455.3	141.6	1,439.0	1,632.0	2,087.3	27.5	
With dependants	12.9	27.7	277.3	305.1	317.9	101.0	418.2	532.6	850.6	21.1	
Without dependants	* 5.0	45.5	86.8	132.3	137.3	40.6	1,020.8	1,099.4	1,236.7	34.6	
Lone parent	6.5	8.4	112.3	120.6	127.1	31.9	124.3	160.1	287.2	42.0	
With dependants	5.7	7.9	107.0	114.9	120.6	28.0	73.4	101.9	222.5	41.9	
Without dependants	* 0.7	* 0.5	* 5.3	5.7	6.5	* 3.9	50.9	58.2	64.7	42.5	
Dependent student	13.4	* 4.7	141.7	146.4	159.9	47.8	263.9	313.1	473.0	50.6	
Non-dependent child	* 4.8	* 4.0	23.2	27.2	32.0	10.8	52.4	76.1	108.1	9.1	
Other family person	* 1.8	* 3.2	12.4	15.6	17.4	6.1	54.9	64.2	81.6	33.6	
Non-family member	9.3	14.7	65.5	80.2	89.5	30.5	306.9	353.8	443.3	23.4	
Lone person	* 2.8	12.9	37.7	50.5	53.4	20.6	234.9	267.2	320.5	29.5	
Not living alone	6.5	* 1.8	27.8	29.6	36.1	10.0	72.0	86.6	122.7	15.2	
Not determined	* 5.0	* 2.7	33.8	36.5	41.5	18.3	96.3	116.7	158.2	33.4	
Birthplace —											
Born in Australia	45.0	63.9	554.0	617.8	662.8	195.7	1,550.7	1,813.3	2,476.1	26.0	
Born outside Australia	13.7	47.1	199.0	246.1	259.8	91.3	786.9	902.8	1,162.6	33.1	
Born in main English-speaking countries	5.9	12.0	71.8	83.7	89.6	24.4	224.2	256.1	345.7	25.8	
Born in other countries	7.8	35.1	127.2	162.4	170.2	66.9	562.7	646.8	817.0	37.7	
Time since last job —											
Had a job	47.2	97.9	595.3	693.2	740.3	226.4	1,942.2	2,245.1	2,985.4	..	
Under 12 months	25.6	15.2	164.1	179.3	204.8	75.2	214.3	292.3	497.1	..	
1 and under 3 years	10.1	22.1	145.3	167.4	177.5	51.5	300.6	358.8	536.3	..	
3 and under 5 years	* 5.2	13.5	83.5	97.0	102.3	31.9	227.9	271.5	373.8	..	
5 and under 10 years	* 3.7	21.6	103.8	125.3	129.0	36.3	421.5	484.1	613.2	..	
10 and under 20 years	* 2.1	15.8	70.3	86.0	88.1	23.7	368.1	408.4	496.6	..	
20 years or more	* 0.5	9.8	28.3	38.1	38.6	7.9	409.8	429.9	468.5	..	
Never had a job	11.6	13.0	157.7	170.7	182.3	60.6	395.5	471.1	653.4	..	
Main activity —											
Home duties or childcare	17.2	58.3	407.2	465.5	482.8	120.2	945.3	1,070.4	1,553.2	..	
Attending an educational institution	25.0	10.7	206.8	217.6	242.6	83.0	386.0	470.3	713.0	..	
Retired or voluntarily inactive	* 0.6	25.2	29.0	54.1	54.7	8.8	598.3	616.0	670.8	..	
Own disability or handicap	* 0.3	* 2.0	11.0	13.0	13.3	9.7	71.6	116.9	130.2	..	
Own illness or injury	7.2	* 1.9	42.9	44.9	52.1	46.9	170.4	255.9	308.0	..	
Looking after ill or disabled person	* 0.2	* 0.9	10.2	11.2	11.4	9.7	56.1	67.1	78.5	..	
Travel, holiday or leisure activity	* 0.9	* 2.6	22.9	25.5	26.3	* 5.0	48.2	53.9	80.3	..	
Working in unpaid voluntary job	* 0.7	* 4.9	8.7	13.5	14.2	* 1.8	44.4	46.2	60.4	..	
Other	6.6	* 4.4	14.2	18.6	25.2	* 2.0	17.3	19.3	44.5	..	
Total	58.7	110.9	753.0	863.9	922.6	287.1	2,337.6	2,716.1	3,638.8	27.9	

(a) Includes 91,400 persons who were permanently unable to work.

### 3. MAIN SOURCE OF INCOME OF PERSONS NOT IN THE LABOUR FORCE

	With marginal attachment to the labour force				Without marginal attachment to the labour force				
	Wanted to work and were actively looking for work	Wanted to work but were not actively looking for work and were available to start work within four weeks			Total	Wanted to work but neither looking nor available for work	Did not want to work	Total(a)	Total not in the labour force
		Dis-couraged jobseeker	Other	Total					
MALES									
	— '000 —								
Main source of income —									
Government pension or cash benefit	13.9	21.3	90.5	111.8	125.7	55.3	451.1	559.8	685.5
Age, disability, sole parent's or widow's pension	* 1.8	11.2	41.6	52.8	54.6	26.4	333.5	406.8	461.4
War disability, repatriation or service pension	* 0.0	* 0.2	* 0.5	* 0.7	* 0.7	* 0.8	16.1	19.3	20.0
ABSTUDY or AUSTUDY	* 3.7	* 0.0	20.8	20.8	24.6	11.7	36.1	47.8	72.4
Newstart or mature age allowance	6.5	* 5.2	11.2	16.5	23.0	6.6	26.2	32.9	55.9
Wife or carer's pension	* 0.0	* 0.0	* 1.2	* 1.2	* 1.2	* 1.8	* 4.3	6.5	7.7
Other government pension or cash benefit	* 1.9	* 4.7	15.0	19.7	21.6	8.1	34.9	46.5	68.1
Profit or loss from own business	* 0.1	* 0.5	* 2.7	* 3.2	* 3.3	* 0.0	* 3.2	* 3.2	6.5
Profit or loss from rental properties	* 0.0	* 0.0	* 1.7	* 1.7	* 1.7	* 0.0	7.2	7.2	8.9
Dividends or interest	* 0.2	* 2.8	* 3.3	6.2	6.4	* 0.4	45.0	46.2	52.6
Child support or maintenance	* 0.0	* 0.0	* 0.0	* 0.0	* 0.0	* 0.0	* 0.0	* 0.0	* 0.0
Superannuation or annuity	* 0.3	* 3.5	7.7	11.2	11.5	* 3.7	82.6	87.9	99.4
Workers compensation, accident or sickness insurance	* 0.7	* 0.0	* 1.0	* 1.0	* 1.8	* 4.2	9.9	18.3	20.1
Other income	* 0.1	* 1.1	11.1	12.2	12.3	* 4.3	14.5	20.2	32.5
Nil or someone else's income	12.4	7.4	99.8	107.2	119.6	27.6	175.4	204.3	323.9
Total	27.8	36.7	217.8	254.5	282.3	95.6	789.0	947.2	1,229.4
FEMALES									
	— '000 —								
Main source of income —									
Government pension or cash benefit	14.2	38.7	218.5	257.2	271.4	81.6	765.4	871.8	1,143.2
Age, disability, sole parent's or widow's pension	* 5.3	20.7	128.8	149.6	154.9	41.6	523.6	589.2	744.1
War disability, repatriation, service or war widow's pension	* 0.0	* 0.3	* 0.9	* 1.3	* 1.3	* 0.8	19.5	20.4	21.7
ABSTUDY or AUSTUDY	* 2.8	* 0.8	19.5	20.4	23.1	10.4	42.1	52.5	75.6
Newstart or mature age allowance	* 3.8	* 3.3	11.2	14.5	18.3	* 3.1	25.1	28.6	46.9
Wife or carer's pension	* 0.0	* 4.8	13.4	18.2	18.2	7.1	65.7	72.8	91.0
Other government pension or cash benefit	* 2.3	8.6	44.6	53.2	55.5	18.6	89.5	108.4	163.9
Profit or loss from own business	* 0.0	* 0.6	* 2.7	* 3.3	* 3.3	* 0.1	13.6	13.8	17.0
Profit or loss from rental properties	* 0.0	* 0.6	* 1.5	* 2.1	* 2.1	* 0.0	13.6	13.6	15.7
Dividends or interest	* 0.3	* 1.5	* 2.9	* 4.5	* 4.8	* 2.7	63.6	66.3	71.1
Child support or maintenance	* 0.3	* 0.0	* 0.6	* 0.6	* 1.0	* 0.0	* 1.7	* 1.7	* 2.7
Superannuation or annuity	* 0.0	* 1.2	* 4.0	* 5.3	* 5.3	* 0.7	52.8	53.5	58.8
Workers compensation, accident or sickness insurance	* 0.4	* 0.0	* 1.6	* 1.6	* 2.0	* 2.9	* 2.5	* 5.3	7.3
Other income	* 0.7	* 0.8	6.6	7.4	8.1	* 1.8	16.2	18.1	26.3
Nil or someone else's income	15.0	30.8	296.7	327.5	342.4	101.6	619.2	724.7	1,067.2
Total	31.0	74.3	535.1	609.4	640.4	191.5	1,548.7	1,769.0	2,409.3

### 3. MAIN SOURCE OF INCOME OF PERSONS NOT IN THE LABOUR FORCE—continued

	With marginal attachment to the labour force				Without marginal attachment to the labour force				
	Wanted to work and were actively looking for work	Wanted to work but were not actively looking for work and were available to start work within four weeks			Total	Wanted to work but neither looking nor available for work	Did not want to work	Total(a)	Total not in the labour force
		Dis-couraged jobseeker	Other	Total					
PERSONS									
	— '000 —								
Main source of income —									
Government pension or cash benefit	28.1	60.1	308.9	369.0	397.1	136.9	1,216.5	1,431.5	1,828.7
Age, disability, sole parent's or widow's pension	7.1	32.0	170.4	202.4	209.5	68.0	857.1	996.0	1,205.5
War disability, repatriation, service or war widow's pension	* 0.0	* 0.6	* 1.5	* 2.0	* 2.0	* 1.6	35.6	39.7	41.7
ABSTUDY or AUSTUDY	6.5	* 0.8	40.4	41.2	47.7	22.1	78.2	100.3	148.0
Newstart or mature age allowance	10.3	8.6	22.4	31.0	41.3	9.7	51.3	61.4	102.7
Wife or carer's pension	* 0.0	* 4.8	14.6	19.4	19.4	8.9	70.0	79.3	98.7
Other government pension or cash benefit	* 4.2	13.3	59.6	72.9	77.2	26.6	124.4	154.9	232.1
Profit or loss from own business	* 0.1	* 1.1	* 5.3	6.5	6.6	* 0.1	16.8	17.0	23.5
Profit or loss from rental properties	* 0.0	* 0.6	* 3.2	* 3.8	* 3.8	* 0.0	20.9	20.9	24.7
Dividends or interest	* 0.6	* 4.3	6.3	10.6	11.2	* 3.1	108.6	112.6	123.8
Child support or maintenance	* 0.3	* 0.0	* 0.6	* 0.6	* 1.0	* 0.0	* 1.7	* 1.7	* 2.7
Superannuation or annuity	* 0.3	* 4.7	11.8	16.5	16.8	* 4.5	135.4	141.4	158.2
Workers compensation, accident or sickness insurance	* 1.1	* 0.0	* 2.7	* 2.7	* 3.8	7.1	12.4	23.6	27.4
Other income	* 0.8	* 1.9	17.7	19.6	20.4	6.1	30.7	38.3	58.8
Nil or someone else's income	27.4	38.2	396.5	434.7	462.0	129.3	794.6	929.0	1,391.1
Total	58.7	110.9	753.0	863.9	922.6	287.1	2,337.6	2,716.1	3,638.8

(a) Includes 91,400 persons who were permanently unable to work.

#### 4. MAIN ACTIVITY OF PERSONS NOT IN THE LABOUR FORCE

	Age group (years)								
	15-19	20-24	25-34	35-44	45-54	55-59	60-64	65-69	Total
MALES									
	— '000 —								
Home duties or childcare	* 0.0	* 1.4	9.0	18.3	15.8	7.5	12.1	11.7	75.7
Attending an educational institution	252.9	64.8	26.4	14.3	* 5.5	* 0.9	* 0.1	* 0.8	365.7
Retired or voluntarily inactive	* 0.4	* 1.5	* 0.8	* 4.8	22.1	33.2	109.7	205.7	378.2
Own disability or handicap	* 1.8	* 5.3	10.5	14.8	25.3	12.5	12.5	8.5	91.2
Own illness or injury	* 3.3	* 5.0	19.8	33.3	55.1	36.1	35.6	19.1	207.3
Looking after ill or disabled person	* 0.2	* 1.3	* 1.4	* 2.1	* 3.7	* 3.4	* 2.4	* 1.8	16.2
Travel, holiday or leisure activity	* 2.2	* 4.0	* 3.9	* 4.9	* 4.8	* 5.3	10.1	8.7	44.0
Working in unpaid voluntary job	* 0.8	* 0.7	* 0.7	* 1.2	* 2.2	* 3.2	* 5.3	7.4	21.4
Other	* 1.7	* 3.5	6.7	* 5.5	* 5.3	* 2.8	* 3.0	* 1.2	29.8
Total	263.2	87.4	79.1	99.2	139.8	105.0	190.9	264.9	1,229.4
FEMALES									
	— '000 —								
Home duties or childcare	14.2	71.9	380.1	327.2	246.5	143.3	147.7	146.7	1,477.5
Attending an educational institution	227.7	64.8	26.7	18.8	5.9	* 2.1	* 0.8	* 0.3	347.3
Retired or voluntarily inactive	* 0.3	* 0.5	* 3.2	* 2.8	26.2	44.8	95.1	119.7	292.5
Own disability or handicap	* 1.6	* 1.1	6.2	6.0	13.3	* 4.9	* 2.3	* 3.6	39.0
Own illness or injury	* 2.9	* 2.2	8.7	20.0	29.6	17.1	12.0	8.1	100.7
Looking after ill or disabled person	* 0.4	* 0.6	* 2.1	6.8	17.9	13.7	10.6	10.1	62.3
Travel, holiday or leisure activity	* 0.9	* 2.1	* 3.1	* 3.2	* 4.4	7.1	7.1	8.5	36.3
Working in unpaid voluntary job	* 0.0	* 0.3	* 2.1	* 3.8	7.1	* 5.5	11.0	9.2	39.0
Other	* 1.6	* 1.7	* 2.0	* 4.7	* 1.5	* 0.9	* 1.7	* 0.7	14.7
Total	249.4	145.2	434.3	393.4	352.5	239.4	288.1	307.0	2,409.3
PERSONS									
	— '000 —								
Home duties or childcare	14.2	73.2	389.1	345.5	262.3	150.8	159.8	158.4	1,553.2
Attending an educational institution	480.6	129.6	53.2	33.1	11.5	* 3.0	* 0.9	* 1.1	713.0
Retired or voluntarily inactive	* 0.7	* 2.0	* 4.0	7.7	48.2	78.1	204.8	325.4	670.8
Own disability or handicap	* 3.3	6.4	16.7	20.8	38.6	17.4	14.8	12.2	130.2
Own illness or injury	6.2	7.2	28.5	53.3	84.7	53.2	47.6	27.1	308.0
Looking after ill or disabled person	* 0.6	* 1.9	* 3.5	8.9	21.6	17.0	13.0	12.0	78.5
Travel, holiday or leisure activity	* 3.1	6.1	6.9	8.1	9.2	12.5	17.2	17.3	80.3
Working in unpaid voluntary job	* 0.8	* 1.0	* 2.8	* 4.9	9.3	8.7	16.4	16.6	60.4
Other	* 3.2	* 5.2	8.7	10.2	6.8	* 3.7	* 4.7	* 1.9	44.5
Total	512.6	232.6	513.4	492.6	492.3	344.3	479.0	571.9	3,638.8



## 5. PERSONS marginally ATTACHED TO THE LABOUR FORCE

	Sep 1993	Sep 1994	Sep 1995	Sep 1996	Sep 1997	Sep 1998
MALES						
— '000 —						
Wanted to work and were actively looking for work	28.1	25.1	30.9	28.6	24.4	27.8
Wanted to work but were not actively looking for work and were available to start work within four weeks	219.0	190.2	230.9	233.3	235.1	254.5
<i>Main reason for not actively looking for work —</i>						
Discouraged jobseeker	40.0	31.7	39.0	29.5	39.7	36.7
Considered too young or too old by employers	12.9	17.1	17.2	15.3	18.6	17.1
Lacked necessary schooling, training, skills or experience	*2.2	*1.5	*2.1	*1.5	*4.5	*2.7
Difficulties because of language or ethnic background	*1.5	*2.6	*0.8	*2.2	*4.1	*3.3
No jobs in locality or line of work	11.8	10.9	7.6	8.1	10.0	12.4
No jobs at all	9.4	7.9	*4.0	*2.4	*2.6	*1.1
Other reasons	27.6	147.8	180.3	187.3	180.6	200.4
Personal reasons	145.3	120.4	144.5	160.2	156.1	162.0
Own ill health or physical disability	36.0	32.8	42.6	49.2	47.0	46.0
Attending an educational institution	88.1	70.3	76.1	90.4	87.8	98.3
Had no need to work	11.0	9.6	7.6	9.5	9.1	6.4
Give others a chance	*1.0	*0.3	*0.2	*0.5	*0.8	*0.6
Welfare payments or pension may be affected	*5.5	*3.6	*2.7	*4.4	*5.4	*4.8
Moved house or holidays	6.4	7.5	6.6	6.2	6.1	5.8
Family reasons	7.4	11.8	12.6	14.8	12.7	17.8
Ill health of other than self	*2.9	*2.1	*3.3	*2.0	*2.2	*4.0
Childcare	*3.2	*3.3	6.4	8.2	6.2	8.4
Other family considerations	*2.4	*1.9	*2.0	*4.5	*4.3	*5.4
No jobs in suitable hours	*1.1	*0.2	*2.1	*1.0	*1.4	*2.5
Other reasons	16.1	15.4	21.1	11.3	10.4	18.1
Had a job to go to(a)	8.3	8.6	10.7	13.6	11.5	13.1
Did not know	*0.9	*2.1	*0.8	*3.0	*3.2	*4.4
<i>Total</i>	<i>247.1</i>	<i>215.3</i>	<i>261.8</i>	<i>262.0</i>	<i>259.5</i>	<i>282.3</i>
FEMALES						
— '000 —						
Wanted to work and were actively looking for work	30.2	36.2	32.9	29.4	28.9	31.0
Wanted to work but were not actively looking for work and were available to start work within four weeks	630.4	521.8	568.1	588.2	602.0	609.4
<i>Main reason for not actively looking for work —</i>						
Discouraged jobseeker	107.4	74.8	72.9	89.4	78.7	74.3
Considered too young or too old by employers	33.7	24.0	29.6	31.8	30.1	24.1
Lacked necessary schooling, training, skills or experience	18.6	15.8	13.7	17.2	15.4	22.1
Difficulties because of language or ethnic background	6.2	7.7	6.9	10.4	12.2	7.0
No jobs in locality or line of work	31.3	18.3	17.8	20.3	16.2	17.1
No jobs at all	17.6	9.0	*5.0	9.8	*4.8	*4.0
Other reasons	502.7	423.7	468.8	476.4	493.5	507.8
Personal reasons	193.4	161.3	178.8	166.9	188.0	192.7
Own ill health, physical disability or pregnancy	43.4	49.3	43.8	44.3	54.3	50.6
Attending an educational institution	90.8	68.8	78.0	76.9	84.7	90.3
Had no need to work	32.8	20.7	29.7	26.1	25.2	28.7
Give others a chance	6.6	*4.0	*3.3	*3.6	*3.4	*3.4
Welfare payments or pension may be affected	8.8	9.4	10.9	6.4	8.9	12.3
Moved house or holidays	11.1	9.1	13.1	9.6	11.5	7.3
Family reasons	275.5	237.9	257.4	279.8	273.8	283.4
Ill health of other than self	16.5	16.1	19.3	20.7	14.5	20.0
Childcare	213.9	170.9	185.3	192.0	200.2	200.8
Other family considerations	45.2	51.0	52.7	67.1	59.2	62.6
No jobs in suitable hours	6.9	7.4	7.1	8.8	6.8	6.4
Other reasons	26.9	17.1	25.5	20.9	24.9	25.3
Had a job to go to(a)	13.5	17.9	22.7	14.8	21.6	23.6
Did not know	6.8	*5.3	*3.6	7.6	8.2	*3.8
<i>Total</i>	<i>660.7</i>	<i>558.0</i>	<i>601.0</i>	<i>617.6</i>	<i>630.9</i>	<i>640.4</i>

## 5. PERSONS NOT IN THE LABOUR FORCE WITH MARGINAL ATTACHMENT—continued

	Sep 1993	Sep 1994	Sep 1995	Sep 1996	Sep 1997	Sep 1998
PERSONS						
— '000 —						
Wanted to work and were actively looking for work	58.3	61.4	63.8	58.0	53.3	58.7
Wanted to work but were not actively looking for work and were available to start work within four weeks	849.5	712.0	799.0	821.5	837.2	863.9
<i>Main reason for not actively looking for work —</i>						
Discouraged jobseeker	147.4	106.5	111.9	118.9	118.4	110.9
Considered too young or too old by employers	50.8	41.2	50.4	47.1	48.7	41.2
Lacked necessary schooling, training, skills or experience	20.1	17.9	16.1	18.7	19.9	24.8
Difficulties because of language or ethnic background	8.8	8.5	8.2	12.6	16.3	10.3
No jobs in locality or line of work	42.2	25.9	28.3	28.4	26.2	29.6
No jobs at all	25.5	13.0	8.8	12.2	7.4	*5.1
Other reasons	672.6	571.5	649.3	663.7	674.2	708.0
Personal reasons	338.7	281.7	323.4	327.1	344.1	354.6
Own ill health, physical disability or pregnancy	79.5	82.2	86.3	93.5	101.3	96.6
Attending an educational institution	178.8	139.1	154.0	167.3	172.5	188.6
Had no need to work	42.4	28.3	43.0	35.6	34.3	35.2
Give others a chance	6.9	*4.2	*4.2	*4.2	*4.2	*4.0
Welfare payments or pension may be affected	12.4	12.1	15.8	10.7	14.3	17.1
Moved house or holidays	18.6	15.7	20.0	15.8	17.5	13.1
Family reasons	282.9	249.7	270.0	294.6	286.5	301.2
Ill health of other than self	18.6	19.4	22.3	22.8	16.7	24.0
Childcare	217.2	177.3	192.7	200.2	206.4	209.2
Other family considerations	47.1	53.0	55.1	71.6	63.4	68.0
No jobs in suitable hours	8.0	7.6	9.3	9.8	8.3	8.8
Other reasons	43.0	32.5	46.6	32.2	35.3	43.4
Had a job to go to(a)	21.9	26.6	33.4	28.3	33.0	36.7
Did not know	7.7	7.4	*4.4	10.6	11.4	8.2
<b>Total</b>	<b>907.8</b>	<b>773.3</b>	<b>862.8</b>	<b>879.6</b>	<b>890.5</b>	<b>922.6</b>

(a) Includes persons who had a job, but up to the end of the reference week had been away from work without pay for four weeks or longer and had not been actively looking for work.

# 6. PERSONS marginally ATTACHED TO THE LABOUR FORCE: INTENTION TO ENTER THE LABOUR FORCE

	Intention to enter the labour force in the next twelve months				Full-time or part-time preference		
	Intended to enter	Might enter	Did not intend to enter	Did not know	Full-time	Part-time	Total(a)
MALES							
— '000 —							
Main reason for not actively looking for work—							
Wanted to work and were actively looking for work	27.8	..	..	..	18.4	* 5.6	27.8
Were available to start work within four weeks	12.6	..	..	..	7.6	* 2.6	12.6
Were not available to start work within four weeks	15.2	..	..	..	10.8	* 3.0	15.2
Wanted to work but were not actively looking for work and were available to start work within four weeks	148.9	36.7	54.9	14.0	88.2	119.8	254.5
Discouraged jobseeker	16.4	* 4.8	12.9	* 2.6	9.6	12.4	36.7
Considered too young or too old	* 5.0	* 2.6	8.9	* 0.7	* 1.7	* 5.2	17.1
Lacked necessary schooling, training, skills or experience	* 1.6	* 0.8	* 0.0	* 0.4	* 1.7	* 0.7	* 2.7
Difficulties with language or ethnic background	* 2.4	* 0.3	* 0.2	* 0.4	* 2.1	* 0.5	* 3.3
No jobs	7.5	* 1.1	* 3.8	* 1.1	* 4.1	6.0	13.5
Other reasons	116.8	32.0	41.2	10.3	67.5	102.1	200.3
Personal reasons	92.9	25.0	35.0	9.0	52.3	86.4	162.0
Own ill health/physical disability/pregnancy	17.6	7.7	16.6	* 4.1	14.5	17.4	46.0
Attending an educational institution	66.3	15.2	12.5	* 4.3	32.3	63.2	98.3
Other personal reasons	9.0	* 2.1	5.9	* 0.6	* 5.6	5.8	17.6
Family reasons	9.2	* 4.0	* 3.3	* 1.3	7.5	7.3	17.7
Ill health of other than self	* 2.7	* 0.7	* 0.6	* 0.0	* 1.1	* 2.5	* 4.0
Childcare	* 4.0	* 1.8	* 1.8	* 0.8	* 4.3	* 2.8	8.4
Other family considerations	* 2.5	* 1.5	* 1.0	* 0.5	* 2.0	* 2.0	* 5.4
No jobs in suitable hours	* 2.0	* 0.4	* 0.0	* 0.0	* 0.4	* 2.1	* 2.5
Other reasons	12.7	* 2.5	* 2.9	* 0.0	7.3	6.3	18.1
Had a job to go to(b)	12.0	* 0.0	* 0.4	* 0.6	8.4	* 4.0	13.1
Did not know	* 3.7	* 0.0	* 0.3	* 0.4	* 2.7	* 1.3	* 4.4
Total	176.7	36.7	54.9	14.0	106.6	125.4	282.3
FEMALES							
— '000 —							
Main reason for not actively looking for work—							
Wanted to work and were actively looking for work	31.0	..	..	..	10.5	19.1	31.0
Were available to start work within four weeks	20.6	..	..	..	6.2	13.9	20.6
Were not available to start work within four weeks	10.3	..	..	..	* 4.3	* 5.2	10.3
Wanted to work but were not actively looking for work and were available to start work within four weeks	284.5	107.5	182.4	34.9	98.9	406.8	609.4
Discouraged jobseeker	30.6	15.6	25.5	* 2.6	11.2	35.3	74.3
Considered too young or too old	* 4.4	* 4.8	14.3	* 0.6	* 2.1	8.3	24.1
Lacked necessary schooling, training, skills or experience	10.5	* 4.5	6.1	* 1.0	* 3.4	12.7	22.1
Difficulties with language or ethnic background	* 3.6	* 1.1	* 1.9	* 0.3	* 1.4	* 2.6	7.0
No jobs	12.0	* 5.2	* 3.2	* 0.7	* 4.3	11.8	21.1
Other reasons	231.3	90.1	154.6	31.7	81.3	353.4	507.7
Personal reasons	101.2	34.1	45.4	12.0	40.1	120.4	192.7
Own ill health/physical disability/pregnancy	21.0	11.7	15.0	* 2.9	7.5	30.8	50.6
Attending an educational institution	63.0	12.9	9.2	* 5.2	27.5	57.2	90.3
Other personal reasons	17.2	9.5	21.2	* 3.9	* 5.1	32.4	51.7
Family reasons	109.8	53.7	103.0	16.9	37.9	211.0	283.4
Ill health of other than self	10.0	* 4.0	* 4.8	* 1.2	* 3.7	12.6	20.0
Childcare	76.8	34.8	78.7	10.5	28.2	150.8	200.8
Other family considerations	22.9	14.9	19.5	* 5.2	6.0	47.6	62.6
No jobs in suitable hours	* 4.6	* 0.0	* 0.6	* 1.1	* 0.4	* 5.3	6.4
Other reasons	15.7	* 2.3	* 5.5	* 1.7	* 2.9	16.6	25.3
Had a job to go to(b)	20.3	* 1.4	* 1.6	* 0.3	5.7	15.9	23.6
Did not know	* 2.3	* 0.5	* 0.7	* 0.3	* 0.7	* 2.2	* 3.8
Total	315.5	107.5	182.4	34.9	109.4	425.9	640.4

**6. PERSONS marginally attached to the labour force: intention to enter the labour force—continued**

	Intention to enter the labour force in the next twelve months			Full-time or part-time preference		Total(a)
	Intended to enter	Might enter	Did not intend to enter	Did not know	Full-time	Part-time
PERSONS	— '000 —					
<i>Main reason for not actively looking for work—</i>						
Wanted to work and were actively looking for work	58.7	..	..	..	28.9	24.6
Were available to start work within four weeks	33.2	..	..	..	13.8	16.4
Were not available to start work within four weeks	25.5	..	..	..	15.1	8.2
Wanted to work but were not actively looking for work and were available to start work within four weeks	433.5	144.3	237.2	48.9	187.1	526.6
Discouraged jobseeker	46.9	20.3	38.4	* 5.3	20.9	47.8
Considered too young or too old	9.3	7.3	23.2	* 1.3	* 3.8	13.5
Lacked necessary schooling, training, skills or experience	12.0	* 5.3	6.1	* 1.4	* 5.1	13.4
Difficulties with language or ethnic background	6.0	* 1.4	* 2.1	* 0.7	* 3.6	* 3.1
No jobs	19.5	6.3	7.0	* 1.8	8.4	17.8
Other reasons	348.2	122.1	195.8	42.0	148.7	455.5
Personal reasons	194.1	59.1	80.4	21.0	92.4	206.9
Own ill health/physical disability/pregnancy	38.5	19.5	31.6	7.0	22.0	48.2
Attending an educational institution	129.4	28.1	21.7	9.5	59.8	120.4
Other personal reasons	26.2	11.6	27.1	* 4.5	10.6	38.2
Family reasons	119.0	57.7	106.3	18.2	45.3	218.3
Ill health of other than self	12.7	* 4.7	* 5.4	* 1.2	* 4.8	15.1
Childcare	80.9	36.6	80.5	11.3	32.5	153.7
Other family considerations	25.4	16.4	20.5	5.7	8.0	49.6
No jobs in suitable hours	6.6	* 0.4	* 0.6	* 1.1	* 0.8	7.4
Other reasons	28.5	* 4.8	8.4	* 1.7	10.1	22.9
Had a job to go to(b)	32.3	* 1.4	* 2.0	* 1.0	14.1	19.9
Did not know	6.1	* 0.5	* 1.0	* 0.7	* 3.4	* 3.5
<b>Total</b>	<b>492.2</b>	<b>144.3</b>	<b>237.2</b>	<b>48.9</b>	<b>216.0</b>	<b>551.3</b>

(a) Includes those persons who had 'no preference' to full-time or part-time work. (b) Includes persons who had a job but, up to the end of the reference week, had been away from work without pay for four weeks or longer and had not been actively looking for work.

## 7. DISCOURAGED JOBSEEKERS

	Sep 1993	Sep 1994	Sep 1995	Sep 1996	Sep 1997	Sep 1998
MALES						
— '000 —						
<i>Age group (years) —</i>						
15–19	5.8	*3.0	*3.6	*2.1	*3.9	*2.7
20–24	*3.3	*1.6	*1.3	*1.2	*2.3	*1.6
25–34	*3.6	*1.9	*2.5	*0.7	*0.9	*1.8
35–44	*2.5	*0.9	*2.4	*2.4	*3.3	*4.2
45–54	*3.3	*1.1	*3.3	*2.4	6.9	*2.8
55–59	*4.5	*4.8	*3.2	*2.5	*4.6	*5.1
60–64	10.0	8.8	12.9	10.7	9.1	8.3
65–69	7.1	9.6	9.7	7.4	8.8	10.3
<i>Whether looked for work in the last twelve months —</i>						
Had looked for work	19.8	13.8	18.1	9.9	16.1	13.7
Less than 13 weeks ago	16.6	9.9	13.3	7.3	11.7	9.8
13 to 26 weeks ago	*2.0	*1.4	*1.9	*0.6	*2.1	*2.1
26 to 52 weeks ago	*1.3	*2.5	*2.9	*2.1	*2.3	*1.8
Had not looked for work	20.2	17.9	20.9	19.5	23.7	23.0
<i>Whether intended to enter the labour force in the next twelve months —</i>						
Intended to enter(a)	29.5	17.8	22.9	15.6	24.4	21.2
Did not intend to enter(b)	10.6	13.9	16.1	13.9	15.3	15.5
<i>Time since last job —</i>						
Had a job	34.6	28.3	35.1	26.8	33.6	32.8
Under 12 months	9.2	*4.9	6.7	*4.1	*4.0	6.8
1 and under 3 years	12.8	10.3	8.9	6.2	7.4	9.7
3 and under 5 years	5.0	5.9	7.4	6.7	8.8	*5.0
5 and under 10 years	5.9	*5.2	7.4	7.1	9.2	9.3
10 and under 20 years	*1.7	*2.0	*2.8	*2.4	*3.3	*2.0
20 years or more	*0.0	*0.0	*1.7	*0.4	*0.9	*0.0
Never had a job	5.4	*3.3	*3.9	*2.7	6.2	*3.9
<i>Total</i>	<i>40.0</i>	<i>31.7</i>	<i>39.0</i>	<i>29.5</i>	<i>39.7</i>	<i>36.7</i>
FEMALES						
— '000 —						
<i>Age group (years) —</i>						
15–19	*2.4	*3.2	*1.9	*3.5	*3.1	*3.5
20–24	*2.6	*3.3	*0.4	*3.2	*3.4	*1.7
25–34	13.0	7.8	11.5	9.9	11.3	7.5
35–44	29.0	18.1	16.1	21.0	12.8	18.3
45–54	28.0	20.5	19.4	23.1	18.4	18.5
55–59	17.8	8.3	10.7	11.2	13.1	12.2
60–64	8.5	8.0	8.2	9.6	9.4	8.9
65–69	6.2	5.7	*4.8	7.9	7.1	*3.6
<i>Whether looked for work in the last twelve months —</i>						
Had looked for work	32.8	21.0	25.4	27.8	23.7	23.2
Less than 13 weeks ago	25.5	15.2	19.6	21.7	17.0	17.4
13 to 26 weeks ago	*2.8	*3.6	*1.0	*2.8	*2.5	*3.5
26 to 52 weeks ago	*4.5	*2.2	*4.9	*3.3	*4.2	*2.3
Had not looked for work	74.6	53.9	47.5	61.6	55.0	51.0
<i>Whether intended to enter the labour force in the next twelve months —</i>						
Intended to enter(a)	65.6	43.0	40.4	56.0	48.3	46.1
Did not intend to enter(b)	41.7	31.8	32.5	33.4	30.4	28.2
<i>Time since last job —</i>						
Had a job	100.3	68.5	67.5	79.2	67.2	65.2
Under 12 months	13.9	6.8	8.8	7.5	*4.0	8.4
1 and under 3 years	20.1	12.9	*4.6	14.5	13.8	12.4
3 and under 5 years	15.2	9.4	13.7	11.9	12.2	8.5
5 and under 10 years	21.2	17.7	15.6	21.0	15.9	12.3
10 and under 20 years	19.0	12.1	15.3	15.5	13.8	13.7
20 years or more	10.9	9.6	9.7	8.7	7.5	9.8
Never had a job	7.1	6.3	5.4	10.3	11.5	9.1
<i>Total</i>	<i>107.4</i>	<i>74.8</i>	<i>72.9</i>	<i>89.4</i>	<i>78.7</i>	<i>74.3</i>

**7. DISCOURAGED JOBSEEKERS—continued**

	Sep 1993	Sep 1994	Sep 1995	Sep 1996	Sep 1997	Sep 1998
PERSONS						
— '000 —						
<i>Age group (years) —</i>						
15–19	8.2	6.2	*5.5	5.7	7.0	6.2
20–24	5.7	*4.9	*1.7	*4.4	5.7	*3.3
25–34	16.7	9.7	14.1	10.6	12.2	9.3
35–44	31.4	19.0	18.5	23.4	16.2	22.5
45–54	31.3	21.6	22.7	25.5	25.3	21.2
55–59	22.3	13.1	13.9	13.6	17.7	17.3
60–64	18.5	16.8	21.0	20.3	18.5	17.2
65–69	13.2	15.2	14.6	15.3	15.9	13.9
<i>Whether looked for work in the last twelve months —</i>						
Had looked for work	52.6	34.8	43.5	37.7	39.8	36.9
Less than 13 weeks ago	42.0	25.1	32.9	29.0	28.6	27.2
13 to 26 weeks ago	*4.8	5.0	*2.9	*3.4	*4.6	5.6
26 to 52 weeks ago	5.8	*4.7	7.7	*5.4	6.5	*4.1
Had not looked for work	94.8	71.8	68.4	81.2	78.7	74.0
<i>Whether intended to enter the labour force in the next twelve months —</i>						
Intended to enter(a)	95.1	60.8	63.3	71.6	72.7	67.3
Did not intend to enter(b)	52.3	45.7	48.6	47.3	45.7	43.7
<i>Time since last job —</i>						
Had a job	134.9	96.9	102.6	106.0	100.8	97.9
Under 12 months	23.1	11.7	15.5	11.5	8.0	15.2
1 and under 3 years	32.9	23.2	13.5	20.7	21.1	22.1
3 and under 5 years	20.2	15.3	21.1	18.6	21.0	13.5
5 and under 10 years	27.0	22.9	23.0	28.2	25.1	21.6
10 and under 20 years	20.7	14.2	18.1	17.9	17.2	15.8
20 years or more	10.9	9.6	11.4	9.1	8.4	9.8
Never had a job	12.5	9.6	9.3	13.0	17.7	13.0
<b>Total</b>	<b>147.4</b>	<b>106.5</b>	<b>111.9</b>	<b>118.9</b>	<b>118.4</b>	<b>110.9</b>

(a) Includes 'might enter the labour force'. (b) Includes 'did not know'.

**8. PERSONS NOT IN THE LABOUR FORCE FOR CHILDCARE REASONS WHO WANTED TO WORK BUT WERE NOT ACTIVELY LOOKING FOR WORK**

	<i>Not actively looking for work but available to start within four weeks</i>		<i>Not actively looking for work and not available to start work within four weeks for childcare reasons</i>	<i>Total</i>
	<i>Childcare was the main reason for not actively looking for work</i>	<i>Childcare was a reason for not actively looking for work</i>		
<b>FEMALES</b>				
— '000 —				
<i>Age group (years) —</i>				
15-19	* 4.6	6.3	* 0.6	6.9
20-24	28.2	29.9	* 5.0	34.9
25-34	102.2	115.9	32.4	148.3
35-44	59.6	72.4	18.4	90.7
45-54	* 5.2	5.8	* 1.6	7.4
55-69	* 1.0	* 1.0	* 0.1	* 1.1
<i>Age of youngest child (years) —</i>				
0-2	111.3	122.2	43.1	165.3
3-5	53.8	62.3	11.2	73.5
6-11	33.9	44.4	* 3.7	48.1
12 and over	* 1.8	* 2.4	* 0.0	* 2.4
<i>Relationship in household —</i>				
Family member	198.6	228.4	56.2	284.6
Wife	144.5	161.3	47.6	208.9
With dependants	144.0	160.9	47.6	208.4
Without dependants	* 0.5	* 0.5	* 0.0	* 0.5
Lone parent	53.8	66.7	8.7	75.4
Not determined	* 2.3	* 2.9	* 1.8	* 4.7
<i>Birthplace —</i>				
Born in Australia	143.6	164.7	40.6	205.3
Born outside Australia	57.3	66.6	17.4	84.0
Born in main English-speaking countries	19.4	22.8	* 3.4	26.1
Born in other countries	37.8	43.8	14.1	57.9
<b>Total</b>	<b>200.8</b>	<b>231.3</b>	<b>58.0</b>	<b>289.3</b>
<b>PERSONS</b>				
— '000 —				
<i>Age group (years) —</i>				
15-19	* 4.6	6.3	* 0.6	6.9
20-24	28.6	30.3	* 5.0	35.3
25-34	105.5	119.7	32.7	152.4
35-44	62.7	76.7	19.1	95.8
45-54	6.8	7.4	* 1.6	9.0
55-69	* 1.0	* 1.0	* 0.1	* 1.1
<i>Age of youngest child (years) —</i>				
0-2	114.5	126.0	43.5	169.6
3-5	56.6	65.5	11.8	77.3
6-11	35.9	47.1	* 3.7	50.8
12 and over	* 2.2	* 2.8	* 0.0	* 2.8
<i>Relationship in household —</i>				
Family member	206.5	238.0	57.3	295.3
Husband or wife	148.2	166.4	47.6	213.9
With dependants	147.7	165.9	47.6	213.4
Without dependants	* 0.5	* 0.5	* 0.0	* 0.5
Lone parent	58.0	71.3	9.7	81.0
Not determined	* 2.7	* 3.4	* 1.8	* 5.2
<i>Birthplace —</i>				
Born in Australia	151.3	173.0	41.3	214.3
Born outside Australia	57.9	68.4	17.8	86.2
Born in main English-speaking countries	19.6	23.7	* 3.4	27.1
Born in other countries	38.3	44.7	14.4	59.1
<b>Total</b>	<b>209.2</b>	<b>241.4</b>	<b>59.1</b>	<b>300.4</b>

# 9. PERSONS NOT IN THE LABOUR FORCE WHO PREVIOUSLY HAD A JOB

	Last job less than 20 years ago						Last job 20 or more years ago	Total(b)
	Status in employment in last job			Full-time or part-time worker in last job		Total(a)		
	Em- ployees	Own account workers	Em- ployers	Full-time	Part-time			
MALES								
	— '000 —							
Reason for ceasing last job —								
Job loser	448.3	37.5	11.7	420.7	72.1	497.6	23.0	520.6
Retrenched	170.9	* 2.8	* 1.7	145.7	28.3	175.5	* 2.2	177.6
Job was temporary or seasonal and did not leave to return to studies	37.1	* 1.2	* 0.0	13.1	23.9	38.3	* 0.4	38.7
Own ill health or injury	236.5	28.5	6.3	250.3	18.9	271.3	20.4	291.7
Business closed down for economic reasons	* 3.8	* 5.0	* 3.7	11.6	* 1.0	12.5	* 0.0	12.5
Job leaver	352.8	38.2	20.6	331.9	77.9	412.1	20.5	432.6
Unsatisfactory work arrangements	19.5	* 0.6	* 0.3	13.9	6.6	20.5	* 0.0	20.5
Job was temporary or seasonal and left to return to studies	24.2	* 0.0	* 0.0	9.9	14.3	24.2	* 0.0	24.2
Retired, did not want to work any longer	155.6	20.3	11.0	169.1	16.4	186.9	6.5	193.4
Own disability or handicap	37.0	* 4.9	* 0.6	39.6	* 2.8	42.5	11.2	53.7
Returned to studies	46.2	* 0.5	* 0.0	29.0	17.6	46.6	* 0.0	46.6
Pregnancy or to have children	* 1.3	* 0.0	* 0.0	* 0.9	* 0.0	* 1.3	* 0.9	* 2.2
To look after family, house or someone else	19.4	* 2.6	* 0.4	17.8	* 4.5	22.4	* 1.0	23.4
Have holiday, moved house or spouse transferred	26.3	* 1.5	* 0.9	19.5	9.5	29.2	* 0.0	29.2
Business closed down for other reasons	6.7	6.2	7.0	18.1	* 1.4	19.8	* 0.3	20.2
Other	16.6	* 1.6	* 0.5	13.9	* 4.8	18.8	* 0.5	19.3
Occupation in last job —								
Managers and administrators	31.3	12.8	* 5.1	46.6	* 2.6	49.2	n.a.	n.a.
Professionals	78.0	* 3.8	* 4.3	73.4	12.7	86.6	n.a.	n.a.
Associate professionals	64.8	13.5	11.9	83.4	6.8	90.2	n.a.	n.a.
Tradespersons and related workers	151.6	24.8	* 4.0	165.5	12.3	180.3	n.a.	n.a.
Advanced clerical and service workers	6.6	* 0.0	* 0.4	6.0	* 1.0	6.9	n.a.	n.a.
Intermediate clerical, sales and service workers	69.7	* 0.8	* 0.9	61.0	10.5	71.4	n.a.	n.a.
Intermediate production and transport workers	164.8	10.9	* 1.3	152.9	22.3	177.1	n.a.	n.a.
Elementary clerical, sales and service workers	64.6	* 3.7	* 2.5	37.7	33.0	70.8	n.a.	n.a.
Labourers and related workers	169.7	* 5.4	* 1.9	126.1	48.8	177.0	n.a.	n.a.
Whether looked for work in the last twelve months —								
Had looked for work	113.5	5.8	* 3.2	80.2	40.2	122.4	* 0.9	123.4
Less than 13 weeks ago	82.8	* 3.4	* 2.5	57.7	29.6	88.7	* 0.3	89.0
13 to 26 weeks ago	8.2	* 1.8	* 0.4	6.6	* 3.4	10.3	* 0.4	10.7
26 to 52 weeks ago	22.5	* 0.6	* 0.3	15.9	7.2	23.5	* 0.2	23.7
Had not looked for work	687.6	69.9	29.2	672.4	109.8	787.2	42.6	829.8
Total	801.1	75.7	32.4	752.6	150.0	909.7	43.5	953.2



9. PERSONS NOT IN THE LABOUR FORCE WHO PREVIOUSLY HAD A JOB—continued

	Last job less than 20 years ago						Last job 20 or more years ago	Total(b)
	Status in employment in last job			Full-time or part-time worker in last job		Total(a)		
	Em- ployees	Own account workers	Em- ployers	Full-time	Part-time			
FEMALES								
	— '000 —							
Reason for ceasing last job —								
Job loser	460.0	18.7	12.0	253.2	230.5	490.8	42.3	533.0
Retrenched	182.8	* 4.9	* 0.9	95.1	92.5	188.8	12.3	201.1
Job was temporary or seasonal and did not leave to return to studies	88.2	* 1.3	* 0.4	31.0	56.6	89.9	* 2.5	92.4
Own ill health or injury	178.0	* 5.0	* 3.9	110.4	73.4	186.9	26.2	213.1
Business closed down for economic reasons	11.0	7.4	6.7	16.7	8.1	25.1	* 1.3	26.4
Job leaver	1,038.1	51.9	25.4	666.8	434.9	1,116.5	382.7	1,499.2
Unsatisfactory work arrangements	57.9	* 2.1	* 0.2	23.4	35.6	60.3	* 1.6	61.9
Job was temporary or seasonal and left to return to studies	22.4	* 0.0	* 0.0	8.2	13.1	22.4	* 0.0	22.4
Retired, did not want to work any longer	216.8	14.3	8.0	140.9	96.1	239.5	40.5	279.9
Own disability or handicap	13.8	* 1.6	* 0.1	8.9	5.6	15.5	* 5.4	20.9
Returned to studies	56.9	* 0.8	* 0.0	24.7	32.6	57.8	* 0.4	58.2
To get married	24.1	* 0.6	* 0.3	22.9	* 2.4	25.3	101.1	126.4
Pregnancy or to have children	379.1	* 4.5	* 1.3	259.8	121.3	384.9	150.6	535.5
To look after family, house or someone else	109.1	* 5.1	* 3.4	64.0	51.1	117.5	62.0	179.5
Have holiday, moved house or spouse transferred	115.1	6.4	* 0.8	66.3	54.3	122.3	11.6	133.9
Business closed down for other reasons	7.0	14.8	9.4	24.4	6.9	31.5	* 2.7	34.2
Other	35.8	* 1.7	* 1.9	23.2	16.0	39.4	6.8	46.2
Occupation in last job —								
Managers and administrators	16.7	8.0	* 2.2	24.0	* 2.4	26.8	n.a.	n.a.
Professionals	167.9	* 5.2	* 1.0	103.7	67.1	174.4	n.a.	n.a.
Associate professionals	93.7	14.5	16.6	99.2	25.9	125.2	n.a.	n.a.
Tradespersons and related workers	58.5	7.4	* 5.0	46.1	22.6	70.8	n.a.	n.a.
Advanced clerical and service workers	97.0	* 4.1	* 2.7	73.6	29.4	104.0	n.a.	n.a.
Intermediate clerical, sales and service workers	395.8	10.0	* 3.8	234.7	172.6	409.7	n.a.	n.a.
Intermediate production and transport workers	94.3	* 2.5	* 0.9	71.3	25.3	97.7	n.a.	n.a.
Elementary clerical, sales and service workers	291.9	11.6	* 2.5	127.6	172.8	306.3	n.a.	n.a.
Labourers and related workers	282.4	7.4	* 2.6	139.8	147.4	292.3	n.a.	n.a.
Whether looked for work in the last twelve months —								
Had looked for work	186.3	5.8	* 3.3	94.9	98.0	195.8	6.2	202.1
Less than 13 weeks ago	135.1	* 3.7	* 1.9	66.8	72.6	141.0	* 5.3	146.3
13 to 26 weeks ago	20.2	* 1.0	* 0.7	10.1	11.2	21.9	* 0.3	22.2
26 to 52 weeks ago	31.0	* 1.2	* 0.7	18.0	14.3	32.9	* 0.7	33.6
Had not looked for work	1,311.8	64.7	34.1	825.1	567.4	1,411.4	418.7	1,830.1
Total	1,498.1	70.6	37.4	920.0	665.4	1,607.3	425.0	2,032.2

9. PERSONS NOT IN THE LABOUR FORCE WHO PREVIOUSLY HAD A JOB—continued

	Last job less than 20 years ago						Last job 20 or more years ago	Total(b)
	Status in employment in last job			Full-time or part-time worker in last job				
	Em- ployees	Own account workers	Em- ployers	Full-time	Part-time	Total(a)		
PERSONS								
	— '000 —							
Reason for ceasing last job —								
Job loser	908.3	56.2	23.7	673.9	302.6	988.4	65.3	1,053.6
Retrenched	353.8	7.8	* 2.6	240.9	120.7	364.3	14.4	378.7
Job was temporary or seasonal and did not leave to return to studies	125.2	* 2.5	* 0.4	44.1	80.5	128.2	* 2.9	131.1
Own ill health or injury	414.5	33.5	10.3	360.7	92.3	458.3	46.6	504.9
Business closed down for economic reasons	14.8	12.4	10.4	28.3	9.0	37.6	* 1.3	38.9
Job leaver	1,390.8	90.1	46.1	998.7	512.9	1,528.6	403.2	1,931.8
Unsatisfactory work arrangements	77.5	* 2.7	* 0.5	37.3	42.2	80.7	* 1.6	82.4
Job was temporary or seasonal and left to return to studies	46.6	* 0.0	* 0.0	18.1	27.3	46.6	* 0.0	46.6
Retired, did not want to work any longer	372.4	34.6	19.0	310.0	112.4	426.3	47.0	473.3
Own disability or handicap	50.8	6.5	* 0.7	48.5	8.5	58.0	16.6	74.6
Returned to studies	103.0	* 1.3	* 0.0	53.8	50.2	104.4	* 0.4	104.9
To get married	24.1	* 0.6	* 0.3	22.9	* 2.4	25.3	101.1	126.4
Pregnancy or to have children	380.4	* 4.5	* 1.3	260.7	121.3	386.2	151.5	537.7
To look after family, house or someone else	128.5	7.7	* 3.7	81.9	55.7	139.9	63.0	202.9
Have holiday, moved house or spouse transferred	141.4	7.9	* 1.7	85.9	63.7	151.5	11.6	163.1
Business closed down for other reasons	13.7	21.0	16.4	42.5	8.3	51.3	* 3.0	54.4
Other	52.5	* 3.3	* 2.5	37.1	20.8	58.2	7.3	65.5
Occupation in last job —								
Managers and administrators	48.0	20.7	7.3	70.7	* 5.0	76.1	n.a.	n.a.
Professionals	245.9	9.0	* 5.3	177.1	79.9	261.0	n.a.	n.a.
Associate professionals	158.5	27.9	28.5	182.6	32.7	215.4	n.a.	n.a.
Tradespersons and related workers	210.0	32.1	9.0	211.6	34.9	251.2	n.a.	n.a.
Advanced clerical and service workers	103.6	* 4.1	* 3.1	79.5	30.3	111.0	n.a.	n.a.
Intermediate clerical, sales and service workers	465.5	10.8	* 4.8	295.7	183.0	481.1	n.a.	n.a.
Intermediate production and transport workers	259.1	13.4	* 2.3	224.2	47.7	274.8	n.a.	n.a.
Elementary clerical, sales and service workers	356.4	15.3	* 5.0	165.3	205.8	377.0	n.a.	n.a.
Labourers and related workers	452.1	12.8	* 4.5	265.9	196.1	469.4	n.a.	n.a.
Whether looked for work in the last twelve months —								
Had looked for work	299.8	11.7	6.5	175.1	138.2	318.3	7.2	325.4
Less than 13 weeks ago	218.0	7.0	* 4.3	124.5	102.1	229.7	5.6	235.3
13 to 26 weeks ago	28.3	* 2.8	* 1.1	16.7	14.6	32.2	* 0.7	32.9
26 to 52 weeks ago	53.5	* 1.8	* 1.0	33.9	21.5	56.4	* 0.8	57.2
Had not looked for work	1,999.4	134.6	63.3	1,497.5	677.2	2,198.6	461.3	2,660.0
Total	2,299.2	146.3	69.8	1,672.6	815.4	2,516.9	468.5	2,985.4

(a) Includes persons whose full-time or part-time work in their last job varied and those who did not know. (b) Includes persons who were contributing family workers and unpaid voluntary workers.

# 10. POPULATIONS: BY STATE OR TERRITORY OF USUAL RESIDENCE

	NSW	Vic.	Qld	SA	WA	Tas.	NT	ACT	Aust.
MALES									
— '000 —									
<i>Population 1:</i> Persons not in the labour force	435.1	303.1	214.5	108.7	104.6	39.9	4.9	18.6	1,229.4
<i>Population 2:</i> Persons not in the labour force who wanted to work	126.2	90.4	73.5	31.8	35.4	11.2	* 1.5	7.7	377.9
<i>Population 3:</i> Persons not in the labour force with marginal attachment to the labour force	90.4	65.7	57.2	23.6	29.8	7.9	* 1.3	6.3	282.3
<i>Population 4:</i> Persons not in the labour force who wanted to work but were not actively looking for work and were available to start work within four weeks	81.5	60.1	50.9	21.4	26.9	7.2	* 1.1	5.4	254.5
<i>Population 5:</i> Persons not in the labour force who were discouraged jobseekers	12.2	10.0	6.5	* 2.5	4.1	* 0.6	* 0.2	* 0.6	36.7
<i>Population 6:</i> Persons not in the labour force who wanted to work but were not actively looking for work and not available to start work within four weeks	35.8	24.8	16.2	8.2	5.6	3.2	* 0.2	1.5	95.6
<i>Population 7:</i> Persons not in the labour force for childcare reasons who wanted to work but were not actively looking for work	* 3.9	* 2.8	* 1.9	* 1.0	* 0.5	* 0.6	* 0.0	* 0.5	11.1
<i>Population 8:</i> Persons not in the labour force who previously had a job	328.3	237.5	173.7	85.9	80.0	30.7	* 3.4	13.6	953.2

**10. POPULATIONS: BY STATE OR TERRITORY OF USUAL RESIDENCE—continued**

	<i>NSW</i>	<i>Vic.</i>	<i>Qld</i>	<i>SA</i>	<i>WA</i>	<i>Tas.</i>	<i>NT</i>	<i>ACT</i>	<i>Aust.</i>
	FEMALES								
	— '000 —								
<i>Population 1:</i> Persons not in the labour force	838.3	594.4	440.9	204.6	220.0	68.0	10.9	32.2	2,409.3
<i>Population 2:</i> Persons not in the labour force who wanted to work	265.5	206.4	165.6	69.9	84.0	24.9	3.9	11.6	831.8
<i>Population 3:</i> Persons not in the labour force with marginal attachment to the labour force	203.6	156.0	128.5	54.3	66.3	19.7	* 2.9	9.0	640.4
<i>Population 4:</i> Persons not in the labour force who wanted to work but were not actively looking for work and were available to start work within four weeks	194.2	149.8	121.0	51.8	63.2	18.7	* 2.3	8.3	609.4
<i>Population 5:</i> Persons not in the labour force who were discouraged jobseekers	25.9	16.8	13.7	7.9	7.1	2.2	* 0.3	* 0.4	74.3
<i>Population 6:</i> Persons not in the labour force who wanted to work but were not actively looking for work and not available to start work within four weeks	61.9	50.4	37.1	15.5	17.7	5.3	* 1.0	2.6	191.5
<i>Population 7:</i> Persons not in the labour force for childcare reasons who wanted to work but were not actively looking for work	99.8	69.8	58.7	20.6	25.8	9.4	* 2.0	3.3	289.3
<i>Population 8:</i> Persons not in the labour force who previously had a job	680.1	510.0	384.0	171.0	193.1	59.1	8.4	26.6	2,032.2

**10. POPULATIONS: BY STATE OR TERRITORY OF USUAL RESIDENCE**—*continued*

	<i>NSW</i>	<i>Vic.</i>	<i>Qld</i>	<i>SA</i>	<i>WA</i>	<i>Tas.</i>	<i>NT</i>	<i>ACT</i>	<i>Aust.</i>
	PERSONS								
	— '000 —								
<i>Population 1:</i> Persons not in the labour force	1,273.4	897.5	655.5	313.3	324.6	107.9	15.9	50.8	3,638.8
<i>Population 2:</i> Persons not in the labour force who wanted to work	391.8	296.8	239.1	101.7	119.4	36.1	5.5	19.3	1,209.7
<i>Population 3:</i> Persons not in the labour force with marginal attachment to the labour force	294.1	221.7	185.7	77.9	96.1	27.6	4.3	15.3	922.6
<i>Population 4:</i> Persons not in the labour force who wanted to work but were not actively looking for work and were available to start work within four weeks	275.7	209.9	171.9	73.2	90.1	25.9	* 3.4	13.8	863.9
<i>Population 5:</i> Persons not in the labour force who were discouraged jobseekers	38.1	26.8	20.1	10.4	11.1	2.8	* 0.5	* 1.0	110.9
<i>Population 6:</i> Persons not in the labour force who wanted to work but were not actively looking for work and not available to start work within four weeks	97.7	75.2	53.3	23.7	23.4	8.5	* 1.2	4.1	287.1
<i>Population 7:</i> Persons not in the labour force for childcare reasons who wanted to work but were not actively looking for work	103.7	72.6	60.6	21.6	26.3	10.0	* 2.0	3.8	300.4
<i>Population 8:</i> Persons not in the labour force who previously had a job	1,008.4	747.4	557.7	256.9	273.1	89.9	11.8	40.2	2,985.4

## EXPLANATORY NOTES

### INTRODUCTION

**1** The statistics in this publication are compiled from data collected in the Persons Not in the Labour Force Survey that was conducted throughout Australia in September 1998 as a supplement to the monthly Labour Force Survey (LFS). Respondents to the LFS who were in scope of the supplementary survey were asked further questions.

**2** The publication *Labour Force, Australia* (Cat. no. 6203.0) contains information about survey design, sample redesign, scope, coverage and population benchmarks relevant to the LFS, which also apply to supplementary surveys. It also contains definitions of demographic and labour force characteristics and information about telephone interviewing relevant to both the LFS and supplementary surveys.

### SCOPE

**3** In addition to those already excluded from the LFS, there were approximately 80,000 persons living in remote and sparsely settled parts of Australia who were out of scope of this survey. The exclusion of these persons has only minor impact on any aggregate estimates that are produced for individual States and Territories, except the Northern Territory. Please contact the person listed on the front cover of this publication if you require more information.

**4** Students at boarding schools, patients in hospitals, residents of homes (e.g. retirement homes, homes for persons with handicaps), and inmates of prisons are excluded from all supplementary surveys.

**5** Persons aged 70 years and over were also excluded from this survey.

### COVERAGE

**6** The estimates in this publication relate to persons covered by the survey in September 1998. In the LFS, coverage rules are applied which aim to ensure that each person is associated with only one dwelling and hence has only one chance of selection in the survey.

### RELIABILITY OF THE ESTIMATES

**7** Estimates in this publication are subject to sampling and non-sampling errors:

- Sampling error is the difference between the published estimate and the value that would have been produced if all dwellings had been included in the survey. For more information see the Technical Notes.
- Non-sampling errors are inaccuracies that occur because of imperfections in reporting by respondents and interviewers, and errors made in coding and processing data. These inaccuracies may occur in any enumeration, whether it be a full count or a sample. Every effort is made to reduce the non-sampling error to a minimum by careful design of questionnaires, intensive training and supervision of interviewers, and efficient processing procedures.

### SEASONAL FACTORS

**8** The estimates are based on information collected in the survey month and, due to seasonal factors, may not be representative of other months of the year.

CHANGES IN  
CLASSIFICATIONS

**9** From August 1996, occupation data are classified according to the second edition of the Australian Standard Classification of Occupations. For more detailed information see *ASCO — Australian Standard Classification of Occupations, Second Edition* (Cat. no. 1220.0).

COMPARABILITY OF TIME  
SERIES

**10** Revisions are made to population benchmarks for the LFS after each five-yearly Census of Population and Housing. The last such revision was made in February 1994 to take account of the results of the 1991 Census of Population and Housing. Estimates from past supplementary surveys are not revised when new population benchmarks are introduced. For this reason, some caution should be exercised when interpreting movements in data from surveys using different population benchmarks.

**11** Supplementary surveys are not always conducted on the full LFS sample. Since August 1994 the sample for supplementary surveys has been restricted to seven-eighths of the LFS sample. Since it was introduced, this survey has been conducted on various proportional samples and therefore sampling error associated with previous surveys may vary from sampling error for this survey.

**12** Persons Not in the Labour Force Surveys conducted up to and including September 1987 included all persons aged 15 years and over. From September 1988, the survey excluded all persons aged 70 years and over.

COMPARABILITY WITH  
MONTHLY LABOUR FORCE  
SURVEY DATA

**13** Due to differences in the scope and sample size of this supplementary survey and that of the LFS, the estimation procedure may lead to some small variations between labour force estimates from this survey and those from the LFS.

**14** Estimates as at September 1998 of:

- the civilian population;
- persons in the labour force (employed and unemployed); and
- persons not in the labour force (State or Territory, sex, relationship in household)

appear in this publication, as well as in the September 1998 edition of *Labour Force, Australia* (Cat. no. 6203.0). Estimates of persons not in the labour force include estimates of persons who are permanently unable to work and persons in institutions (e.g. boarding schools, hospitals, prisons, retirement homes, homes for the handicapped). These estimates were collected in the LFS conducted in September 1998 in regard to persons aged 15 years and over.

COMPARABILITY WITH  
MONTHLY LABOUR FORCE  
SURVEY DATA  
*continued*

**15** The difference between the estimates appearing in this publication and *Labour Force, Australia* is chiefly the result of excluding persons aged 70 years and over from estimates appearing in this supplementary survey publication. This is in line with the scope of this supplementary survey. Over one-quarter (29.3%) of the civilian population aged 15 years and over who were not in the labour force were excluded from answering questions from this supplementary survey because they were aged 70 years and over.

**16** Further information on persons not in the labour force is available in *Labour Force, Australia* (Cat. no. 6203.0). Note that this information refers to all persons aged 15 years and over.

PREVIOUS SURVEYS

**17** The Persons Not in the Labour Force Survey was first conducted in May 1975 and then in May 1977. The survey was collected twice a year (March and September) from 1979 to 1987. It has since been conducted annually. Results of previous surveys have been published in *Persons Not in the Labour Force, Australia* (Cat. no. 6220.0) and the standard data service *Persons Not in the Labour Force* on hardcopy, Australia (Cat. no. 6220.0.40.001) for 1994 and 1995.

ACKNOWLEDGMENT

**18** Australian Bureau of Statistics publications draw extensively on information provided freely by individuals, businesses, governments and other organisations. Their continued cooperation is very much appreciated: without it, the wide range of statistics published by the ABS would not be available. Information received by the ABS is treated in strict confidence as required by the *Census and Statistics Act 1905*.

RELATED PUBLICATIONS

**19** Other publications which may be of interest include:

- *Job Search Experience of Unemployed Persons, Australia* (Cat. no. 6222.0)
- *Successful and Unsuccessful Job Search Experience, Australia* (Cat. no. 6245.0)
- *Underemployed Workers, Australia* (Cat. no. 6265.0)

**20** Current publications produced by the ABS are listed in the *Catalogue of Publications and Products* (Cat. no. 1101.0). The ABS also issues, on Tuesdays and Fridays, a *Release Advice* (Cat. no. 1105.0) which lists publications to be released in the next few days. The Catalogue and Release Advice are available from any ABS office or from the ABS Information Service on the World Wide Web, <http://www.abs.gov.au>.



## APPENDIX: POPULATIONS AND DATA ITEMS LIST

The ABS has a range of unpublished data available from the Persons Not in the Labour Force Survey. This section lists the data items and populations which relate to the survey. More detailed breakdowns of some data items are available on request.

The population(s) for a particular data item refers to the persons in the survey to whom the data item relates. Where alternative output categories are available for the same data item, these are shown and the data item name is followed by a bracketed numeral (e.g. BIRTHPLACE (2)).

To obtain unpublished data or more information about the customised data service contact Tim Wardrop on Canberra 02 6252 7204, or by facsimile on 02 6252 7784.

POPULATION 1:	Persons not in the labour force.
POPULATION 2:	Persons not in the labour force who wanted to work.
POPULATION 3:	Persons not in the labour force with marginal attachment to the labour force.
POPULATION 4:	Persons not in the labour force who wanted to work but were not actively looking for work due to childcare reasons, and were available to start work within four weeks.
POPULATION 4A:	Persons not in the labour force who wanted to work but were not actively looking for work and not available to start work within four weeks.
POPULATION 5:	Persons not in the labour force who were discouraged jobseekers.
POPULATION 6:	Persons not in the labour force who wanted to work but were not actively looking for work and not available to start work within four weeks.
POPULATION 6A:	Persons not in the labour force who wanted to work but were not actively looking for work and not available to start work within four weeks due to childcare reasons.
POPULATION 7:	Persons not in the labour force for childcare reasons who wanted to work but were not actively looking for work.
POPULATION 8:	Persons not in the labour force who had previously had a job.

DATA ITEM	POPULATIONS
<b>1 STATE OF USUAL RESIDENCE</b>	<b>ALL</b>
New South Wales	
Victoria	
Queensland	
South Australia	
Western Australia	
Tasmania	
Northern Territory	
Australian Capital Territory	
<b>2 AREA OF USUAL RESIDENCE</b>	<b>ALL</b>
State Capital City	
Balance of State	
Territory	
<b>3 REGION OF USUAL RESIDENCE</b>	<b>ALL</b>
Standard labour force dissemination regions	
<b>4 SEX</b>	<b>ALL</b>
Males	
Females	
<b>5 MARITAL STATUS</b>	<b>ALL</b>
Married	
Not married	
<b>6A RELATIONSHIP IN HOUSEHOLD (1)</b>	<b>ALL</b>
Family member	
Husband or wife	
With dependants	
Without dependants	
Lone parent	
With dependants	
Without dependants	
Dependent student	
Non-dependent child	
Other family person	
Non-family member	
Lone person	
Not living alone	
Not determined	
<b>6B RELATIONSHIP IN HOUSEHOLD (2)</b>	<b>ALL</b>
Family member	
Husband or wife	
With children under 15	
Without children under 15	
Lone parent	
With children under 15	
With dependent students but without children under 15	
Without dependants	
Dependent student	
Non-dependent child	
Other family person	
Non-family member	
Lone person	
Not living alone	
Not determined	

DATA ITEM	POPULATIONS
<b>7A BIRTHPLACE AND PERIOD OF ARRIVAL</b>	<b>ALL</b>
Born in Australia	
Born outside Australia	
Arrived before 1971	
Arrived 1971–80	
Arrived 1981–90	
Arrived 1991 to survey date	
<b>7B BIRTHPLACE (1)</b>	<b>ALL</b>
Born in Australia	
Born outside Australia	
Born in main English-speaking countries	
Born in other countries	
<b>7C BIRTHPLACE (2)</b>	<b>ALL</b>
Born in Australia	
Born outside Australia	
The Middle East and North Africa	
Lebanon	
Africa (excluding North Africa)	
Republic of South Africa	
Northern America	
United States of America	
South America, Central America and the Caribbean	
Chile	
Northeast Asia	
China (including Hong Kong SAR)	
Southeast Asia	
Philippines	
Viet Nam	
Southern Asia	
India	
Europe and the former USSR	
Former Yugoslav Republics	
Germany	
Greece	
Italy	
Netherlands	
Poland	
United Kingdom and Ireland	
Oceania and Antarctica	
New Zealand	
<b>8 AGE GROUP (YEARS)</b>	<b>ALL</b>
15–19	
20–24	
25–34	
35–44	
45–54	
55–59	
60–64	
65–69	

DATA ITEM	POPULATIONS
-----------	-------------

<b>9 PERSONS NOT IN THE LABOUR FORCE SUMMARY VARIABLE</b>	<b>1, 8</b>
---	-------------

Persons not in the labour force  
 With marginal attachment to the labour force  
   Wanted to work and were actively looking for work  
   Were available to start work within four weeks  
   Were not available to start work within four weeks  
   Wanted to work but were not actively looking for work and were available to start work within four weeks  
   Discouraged jobseekers  
   Other  
 Without marginal attachment to the labour force  
   Wanted to work but were not actively looking for work and were not available to start work within four weeks  
   Did not want to work  
   Permanently unable to work

<b>10 WHETHER WANTED TO WORK</b>	<b>1, 8</b>
----------------------------------	-------------

Wanted to work  
 Might want to work  
 Did not want to work  
 Did not know

<b>11 WHETHER LOOKED FOR WORK IN THE LAST TWELVE MONTHS</b>	<b>ALL</b>
---	------------

Had looked for work  
   Less than 5 weeks ago  
   5 and less than 8 weeks ago  
   8 and less than 13 weeks ago  
   13 to 52 weeks ago  
     13 and less than 26 weeks ago  
     26 and less than 39 weeks ago  
     39 to 52 weeks ago  
 Had not looked for work

<b>12 MAIN ACTIVITY WHEN NOT IN THE LABOUR FORCE</b>	<b>ALL</b>
--	------------

Home duties or childcare  
 Attending an educational institution  
 Retired or voluntarily inactive  
 Own disability or handicap  
 Own illness or injury  
 Looking after ill or disabled person  
 Travel, holiday or leisure activity  
 Working in unpaid voluntary job  
 Other

DATA ITEM	POPULATIONS
-----------	-------------

<b>13 TIME SINCE LAST JOB</b>	<b>ALL</b>
-------------------------------	------------

Had a job  
   Under 12 months  
     1 and under 4 weeks  
     4 and under 8 weeks  
     8 and under 13 weeks  
     13 and under 26 weeks  
     26 and under 39 weeks  
     39 and under 52 weeks  
   1 and under 3 years  
   3 and under 10 years  
   3 and under 5 years  
   5 and under 10 years  
   10 years or more  
   10 and under 20 years  
   20 years or more  
 Never had a job

<b>14 REASON FOR CEASING LAST JOB</b>	<b>ALL</b>
---------------------------------------	------------

Job loser  
   Retrenched  
   Job was temporary or seasonal and did not leave to return to studies  
   Own ill health or injury  
   Business closed down for economic reasons  
 Job leaver  
   Unsatisfactory work arrangements  
   Job was temporary or seasonal and left to return to studies  
   Retired, did not want to work any longer  
   Own disability or handicap  
   Returned to studies  
   Pregnancy or to have children  
   To look after family, house or someone else  
   Have holiday, moved house or spouse transferred  
   Business closed down for other reasons  
   Other

<b>15 OCCUPATION IN LAST JOB</b>	<b>ALL</b>
----------------------------------	------------

Last job less than 20 years ago  
   Managers and administrators  
   Professionals  
   Associate professionals  
   Tradespersons and related workers  
   Advanced clerical and service workers  
   Intermediate clerical, sales and service workers  
   Intermediate production and transport workers  
   Elementary clerical, sales and service workers  
   Labourers and related workers  
 Last job 20 or more years ago  
 Had never had a job

DATA ITEM	POPULATIONS
<b>16 STATUS IN EMPLOYMENT IN LAST JOB</b>	<b>ALL</b>
Last job less than 20 years ago	
Employer	
Own account worker	
Employee	
Contributing family worker	
Unpaid voluntary worker	
Last job 20 or more years ago	
Had never had a job	
<b>17 FULL-TIME OR PART-TIME STATUS IN LAST JOB</b>	<b>ALL</b>
Last job less than 20 years ago	
Full-time	
Part-time	
Varied/did not know	
Last job 20 or more years ago	
Had never had a job	
<b>18A INTENTION TO ENTER THE LABOUR FORCE</b>	<b>ALL</b>
Intended to enter the labour force	
Might enter the labour force	
Did not intend to enter the labour force	
Did not know	
Permanently unable to work	
<b>18B INTENTION TO ENTER THE LABOUR FORCE IN THE NEXT TWELVE MONTHS</b>	<b>ALL</b>
Intended to enter the labour force in the next 12 months	
Might enter the labour force in the next 12 months	
Did not intend to enter the labour force in the next 12 months	
Did not know	
Permanently unable to work	
<b>19 MAIN SOURCE OF INCOME</b>	<b>ALL</b>
Government pension or cash benefit	
Age, disability, sole parent's or widow's pension	
War disability, repatriation, service or war widow's pension	
ABSTUDY or AUSTUDY	
Newstart or mature age allowance	
Wife's or carer's pension	
Other government pension or cash benefit	
Profit or loss from own business	
Profit or loss from rental properties	
Dividends or interest	
Child support or maintenance	
Superannuation or annuity	
Workers compensation, accident or sickness insurance	
Other income	
Nil or someone else's income	

DATA ITEM	POPULATIONS
<b>20 TYPE OF WORK PREFERRED</b>	<b>2-7</b>
Full-time work preferred	
Part-time work preferred	
No preference for full-time or part-time work	
<b>21 MAIN REASON FOR NOT ACTIVELY LOOKING FOR WORK</b>	<b>3, 4, 4A</b>
Wanted to work and were actively looking for work	
Were available to start work within four weeks	
Were not available to start work within four weeks	
Wanted to work but were not actively looking for work and were available to start work within four weeks	
Discouraged jobseeker	
Considered too young or too old by employers	
Lacked the necessary schooling, training, skills or experience	
Difficulties because of language or ethnic background	
No jobs in locality or line of work	
No jobs at all	
Other reasons	
Personal reasons	
Own ill health, physical disability or pregnancy	
Attending an educational institution	
Had no need to work	
Give others a chance	
Welfare payments or pension may be affected	
Moved house or holidays	
Family reasons	
Ill health of other than self	
Childcare	
No childcare in locality	
No childcare available at all	
Cost or too expensive	
Booked out or no places available	
Children too young or too old	
Prefers to look after children	
Quality of childcare unsuitable	
Other childcare reasons	
Other family considerations	
No jobs in suitable hours	
Other reasons	
Had a job to go to(a)	
Did not know	
(a) Includes persons who had a job but up to the end of the reference week, had been away from work without pay for four weeks or longer and had not been actively looking for work.	

DATA ITEM	POPULATIONS	DATA ITEM	POPULATIONS
<b>22 ALL REASONS FOR NOT ACTIVELY LOOKING FOR WORK</b>	<b>4, 4A</b>	<b>24 MARGINAL ATTACHMENT SUMMARY VARIABLE</b>	<b>3</b>
Discouraged jobseeker		Wanted to work and were actively looking for work	
Considered too young or too old by employers		Were available to start work within four weeks	
Lacked the necessary schooling, training, skills or experience		Were not available to start work within four weeks	
Difficulties because of language or ethnic background		Wanted to work but were not actively looking for work and were available to start work within four weeks	
No jobs in locality or line of work		Discouraged jobseekers	
No jobs at all		Other	
Other reasons			
Personal reasons		<b>25 AGE OF YOUNGEST CHILD</b>	<b>4A, 6A, 7</b>
Own ill health, physical disability or pregnancy		0–2 years	
Attending an educational institution		3–4 years	
Had no need to work		5 years	
Give others a chance		6–9 years	
Welfare payments or pension may be affected		10–11 years	
Moved house or holidays		12 years and over	
Family reasons		<b>26 NUMBER OF CHILDREN</b>	<b>4A, 6A, 7</b>
Ill health of other than self		Aged 0–2 years	
Childcare		Aged 3–4 years	
No childcare in locality		Aged 5 years	
No childcare available at all		Aged 6–9 years	
Cost or too expensive		Aged 10–11 years	
Booked out or no places available			
Children too young or too old			
Prefers to look after children			
Quality of childcare unsuitable			
Other childcare reasons			
Other family considerations			
No jobs in suitable hours			
Other reasons			
Had a job to go to(a)			
Did not know			
(a) Includes persons who had a job but up to the end of the reference week, had been away from work without pay for four weeks or longer and had not been actively looking for work.			
<b>23 REASON NOT AVAILABLE TO START WORK WITHIN FOUR WEEKS</b>	<b>6, 6A</b>		
Personal reasons			
Own ill health or physical disability			
Pregnancy			
Studying or returning to studies			
Moved house or holidays			
Family reasons			
Ill health of other than self			
Unable to find suitable childcare			
Children too young, preferred to look after children			
On a job-related training program			
Other reasons			

# TECHNICAL NOTES

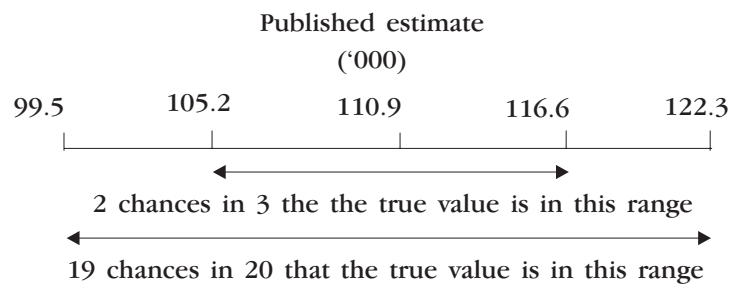
## INTRODUCTION

Since the estimates in these tables are based on information obtained from occupants of a sample of dwellings, they are subject to sampling variability, that is, they may differ from those that would have been produced if all dwellings had been included in the survey. One measure of the likely difference is given by the standard error (SE), which indicates the extent to which an estimate might have varied by chance because only a sample of dwellings was included. There are about two chances in three that a sample estimate will differ by less than one SE from the number that would have been obtained if all dwellings had been included, and about 19 chances in 20 that the difference will be less than two SEs. Another measure of the likely difference is the relative standard error (RSE), which is obtained by expressing the SE as a percentage of the estimate.

SEs for general application are given in table T1. Since they are based on calculations for a limited number of past surveys over a wide range of labour force characteristics, these numbers will not give a precise measure of the SE of a particular estimate but they will provide an indication of its magnitude.

## CALCULATION OF STANDARD ERROR

An example of the calculation and the use of SEs in relation to estimates of persons is as follows. Table 2 shows the estimated number of persons in Australia who were discouraged jobseekers was 110,900. Since this estimate is between 100,000 and 150,000 table T1 shows the SE for Australia will be between 5,450 and 6,500 and can be approximated by interpolation as 5,700 (rounded to the nearest 50). Therefore, there are about two chances in three that the value that would have been produced if all dwellings had been included in the survey will fall in the range 105,200 to 116,600 and about 19 chances in 20 that the value will fall within the range 99,500 to 122,300. This example is illustrated in the diagram below.



As can be seen from the SE table, the smaller the estimate the higher is the RSE. Very small estimates are thus subject to such high SEs (relative to the size of the estimate) as to detract seriously from their value for most reasonable uses. In the tables in this publication, only estimates with RSEs of 25% are considered sufficiently reliable for most purposes. However, estimates with larger RSEs have been included and are preceded by an asterisk (e.g. \*3.4) to indicate they are subject to high SEs and should be used with caution.

## PROPORTIONS AND PERCENTAGES

Proportions and percentages formed from the ratio of two estimates are also subject to sampling errors. The size of the error depends on the accuracy of both the numerator and the denominator. A formula to approximate the RSE of a proportion is:

$$RSE(x/y) = \sqrt{[RSE(x)]^2 - [RSE(y)]^2}$$

Considering the example from the previous page, of the 110,900 persons who were discouraged jobseekers, 36,700 or 33.1% were males. The SE of 36,700 is approximately 3,500 so the RSE is 9.5%. The RSE for 110,900 is 5.1%. Applying the above formula, the RSE of the proportion is  $\sqrt{(9.5)^2 - (5.1)^2}$  or 8%, giving a SE for the proportion (33.1%) of 2.7 percentage points. Therefore, there are about two chances in three that the proportion of discouraged jobseekers who were males was between 30.4% and 35.8% and 19 chances in 20 the proportion was within the range 27.8% to 38.4%.

## DIFFERENCES

Published estimates may also be used to calculate the difference between two survey estimates (of number or percentages). Such an estimate is subject to sampling error. The sampling error of the difference between two estimates depends on their SEs and the relationship (correlation) between them. An approximate SE of the difference between two estimates (x-y) may be calculated by the following formula:

$$SE(x-y) = \sqrt{[SE(x)]^2 + [SE(y)]^2}$$

While this formula will only be exact for differences between separate and uncorrelated characteristics or subpopulations, it is expected to provide a good approximation for all differences likely to be of interest in this publication.

SEs contained in table T1 are applicable to all estimates from this survey.



## T1 STANDARD ERRORS OF ESTIMATES

Size of estimate (persons)	NSW no.	Vic. no	Qld no.	SA no.	WA no.	Tas. no.	NT no.	ACT no.	Australia	
									SE no.	RSE %
100	..	..	..	..	..	110	..	100	..	..
200	..	..	240	210	230	160	240	130	230	115.0
300	380	340	300	260	290	200	290	160	290	96.7
500	490	450	390	340	370	260	360	200	380	76.0
700	580	540	460	400	430	310	420	240	460	65.7
1 000	700	650	550	480	510	370	500	280	560	56.0
1 500	850	790	670	580	620	440	600	330	700	46.7
2 000	980	910	770	660	710	500	680	380	820	41.0
2 500	1 100	1 000	850	750	800	550	750	400	900	36.0
3 000	1 200	1 100	950	800	850	600	800	450	1 000	33.3
3 500	1 300	1 200	1 000	850	900	650	900	500	1 100	31.4
4 000	1 350	1 300	1 050	900	950	650	950	500	1 200	30.0
5 000	1 500	1 400	1 200	1 000	1 050	750	1 050	550	1 300	26.0
7 000	1 750	1 650	1 350	1 150	1 250	850	1 200	650	1 550	22.1
10 000	2 100	1 950	1 600	1 350	1 450	950	1 450	750	1 850	18.5
15 000	2 500	2 350	1 950	1 600	1 700	1 100	1 700	850	2 300	15.3
20 000	2 850	2 650	2 200	1 800	1 950	1 200	1 950	950	2 600	13.0
30 000	3 400	3 150	2 600	2 150	2 300	1 350	2 400	1 150	3 150	10.5
40 000	3 800	3 600	2 950	2 400	2 600	1 500	2 700	1 250	3 650	9.1
50 000	4 200	3 950	3 200	2 650	2 850	1 600	3 000	1 350	4 000	8.0
100 000	5 550	5 250	4 250	3 450	3 700	1 950	4 200	1 750	5 450	5.5
150 000	6 550	6 150	5 000	4 000	4 350	2 150	5 100	2 050	6 500	4.3
200 000	7 300	6 850	5 600	4 450	4 850	2 300	5 800	2 250	7 350	3.7
300 000	8 550	8 000	6 550	5 150	5 650	2 500	..	2 550	8 700	2.9
500 000	10 300	9 650	7 900	6 200	6 800	2 750	..	..	10 700	2.1
1 000 000	13 250	12 350	10 150	7 800	8 650	..	..	..	14 000	1.4
2 000 000	16 800	15 550	12 850	9 750	11 000	..	..	..	18 100	0.9
5 000 000	22 700	20 850	17 350	..	..	..	..	..	24 950	0.5
10 000 000	..	..	..	..	..	..	..	..	31 400	0.3



## GLOSSARY

<b>Actively looking for work</b>	<p>Those persons who were taking active steps to find work. Active steps comprise:</p> <ul style="list-style-type: none"><li>■ registering with Centrelink or the Commonwealth Employment Service for job search assistance;</li><li>■ contacting an employment agency;</li><li>■ contacting prospective employers;</li><li>■ answering a newspaper advertisement for a job;</li><li>■ checking Centrelink or Commonwealth Employment Service touchscreens;</li><li>■ checking factory noticeboards;</li><li>■ advertising or tendering for work; and</li><li>■ contacting friends or relatives.</li></ul>
<b>Available to start work within four weeks</b>	<p>Those persons who were available to start work within four weeks or, for persons with children aged 12 years or under, could start work within four weeks if suitable childcare was available.</p>
<b>Discouraged jobseekers</b>	<p>Persons with marginal attachment to the labour force who wanted to work and were available to start work within the next four weeks but whose main reason for not actively looking for work was that they believed they would not find a job for any of the following reasons:</p> <ul style="list-style-type: none"><li>■ considered to be too young or too old by employers; or</li><li>■ lacked necessary schooling, training, skills or experience; or</li><li>■ difficulties with language or ethnic background; or</li><li>■ no jobs in their locality or line of work; or</li><li>■ no jobs available at all.</li></ul>
<b>Employed</b>	<p>Persons aged 15–69 years who, during the reference week:</p> <ul style="list-style-type: none"><li>■ worked for one hour or more for pay, profit, commission or payment in kind in a job or business, or on a farm (comprising employees, employers and own account workers); or</li><li>■ worked for one hour or more without pay in a family business or on a farm (i.e. contributing family workers); or</li></ul>

- were employees who had a job but were not at work and were: on paid leave; on leave without pay for less than four weeks up to the end of the reference week; stood down without pay because of bad weather or plant breakdown at their place of employment for less than four weeks up to the end of the reference week; on strike or locked out; on workers compensation and expected to be returning to their job; or receiving wages or salary while undertaking full-time study; or
- were employers, own account workers or contributing family workers who had a job, business or farm, but were not at work.

<b>Family reasons for not actively looking for work</b>	Includes ill health of a family member, childcare and other family considerations.
<b>Full-time work</b>	Work involving 35 or more hours a week.
<b>Had a job to go to</b>	Includes persons who had a job but, up to the end of the reference week, had been away from work without pay for four weeks or longer and had not been actively looking for work. Also includes persons who had a job but had not yet started that job.
<b>Job</b>	Any employment, full-time or part-time, lasting two weeks or more.
<b>Job leavers</b>	Persons who voluntarily ceased their last job.
<b>Job losers</b>	Persons who involuntarily ceased their last job.
<b>Main English-speaking countries</b>	Comprises the United Kingdom, Ireland, Canada, South Africa, the United States of America and New Zealand.
<b>Marginal attachment to the labour force</b>	Persons who were not in the labour force in the reference week, wanted to work and: <ul style="list-style-type: none"> <li>■ were actively looking for work but did not meet the availability criteria to be classified as unemployed; or</li> <li>■ were not actively looking for work but were available to start work within four weeks or could start work within four weeks if childcare was available.</li> </ul>

The criteria determining those in the labour force are based on activity (i.e. working or looking for work) and availability to start work during the reference week. The criteria associated with marginal attachment to the labour force, in particular the concepts of wanting to work and reasons for not actively looking for work, are more subjective. Hence, the measurement against these criteria is affected by the respondent's own interpretation of the concepts used. An individual respondent's interpretation may be affected by their work aspirations, as well as family, economic and other commitments.

<b>Occupation of last job</b>	All occurrences of occupation in this publication refer to Major Group as defined by ASCO — <i>Australian Standard Classification of Occupations, Second Edition</i> (Cat. no. 1220.0).
<b>Part-time work</b>	Work involving less than 35 hours a week.
<b>Personal reasons for not actively looking for work</b>	Includes own ill health or physical disability, pregnancy, attending an educational institution, had no need to work, to give others a chance, welfare payments or pension may be affected, moved house or on holidays.
<b>Persons in institutions</b>	Includes persons in general and other hospitals, convalescent homes, homes for the aged, retirement homes, homes for the handicapped, orphanages, boarding schools and prisons.
<b>Persons in the labour force</b>	Persons aged 15–69 years who meet the criteria that would enable them to be classified as being in the labour force, that is, either employed or unemployed.
<b>Persons not in the labour force</b>	Persons who do not meet the criteria that would enable them to be classified as being in the labour force. To be classified as being in the labour force for this survey, a person must be aged 15–69 years and be either employed or unemployed. Persons not in the labour force, therefore, include all persons aged 15–69 years who are not employed, who want to work but do not meet the criteria to be classified as unemployed; who did not want to work; or are permanently unable to work.
<b>Persons not in the labour force for childcare reasons who wanted to work</b>	Persons who wanted to work and: <ul style="list-style-type: none"> <li>■ were not actively looking for work due to childcare reasons, but were available to start work within four weeks; or</li> <li>■ were not actively looking for work and were not available to start work within four weeks for childcare reasons.</li> </ul>
<b>Relationship in household</b>	Two or more related persons (relationship includes relationships by blood, marriage or adoption) usually resident in the same household at the time of the survey. A family comprises a married couple or a family head as defined in <i>Labour Force, Australia</i> (Cat. no. 6203.0), together with any persons having any of the following relationships to them: <ul style="list-style-type: none"> <li>■ sons or daughters of any age, if not married and with no children of their own present; or</li> <li>■ other relatives if not accompanied by a spouse, sons or daughters, or parents of their own; or</li> <li>■ any children under 15 years of age who do not have a parent present.</li> </ul>
<b>Time since last job</b>	The elapsed time since ceasing their last job.

**Unemployed** Persons aged 15–69 years who were not employed during the reference week and:

- had actively looked for full-time or part-time work at any time in the four weeks up to the end of the reference week and:
  - were available for work in the reference week, or would have been available except for temporary illness (i.e. lasting for less than four weeks to the end of the reference week); or
  - were waiting to start a new job within four weeks from the end of the reference week and would have started in the reference week if the job had been available then; or
- were waiting to be called back to a full-time or part-time job from which they had been stood down without pay for less than four weeks up to the end of the reference week (including the whole of the reference week) for reasons other than bad weather or plant breakdown.

**Wanted to work** Persons who did not meet the criteria to be classified as employed or unemployed and who answered 'yes' or 'maybe' when asked if they would like a job.

## SUPPLEMENTARY SURVEYS

Supplementary and special supplementary surveys collect data on particular aspects of the labour force. The following is an historical list of supplementary and special labour force surveys. Data are available in publication form, by subscription or on request. It may be possible to order unpublished data from these surveys by contacting the ABS.

TITLE	CATALOGUE NUMBER
■ Career Experience. Irregular. Latest issue November 1996	6254.0
■ Career Paths of Persons with Trade Qualifications. Final issue 1993 (Discontinued)	6243.0
■ Child Care. Irregular. Latest issue March 1996	4402.0
■ Education and Training Experience. Irregular. Latest issue 1997	6278.0
■ Employee Earnings, Benefits and Trade Union Membership. Annual. Latest issue August 1998	6310.0
■ Employment Benefits. Final issue August 1994 (Discontinued)	6334.0.40.001
■ Job Search Experience of Unemployed Persons. Annual. Latest issue July 1998	6222.0
■ Labour Force Experience. Two-yearly. Latest issue February 1997	6206.0
■ Labour Force Status and Educational Attainment. Final issue February 1994 (Discontinued)	6235.0
■ Labour Force Status and Other Characteristics of Families. Annual. Latest issue June 1998	6224.0
■ Labour Force Status and Other Characteristics of Migrants. Irregular. Latest issue November 1996	6250.0
■ Labour Mobility. Two-yearly. Latest issue February 1998	6209.0
■ Multiple Jobholding. Irregular. Latest issue August 1997	6216.0
■ Participation in Education. Annual. Latest issue September 1997	6272.0
■ Persons Employed at Home. Irregular. Latest issue September 1995	6275.0
■ Persons Not in the Labour Force. Annual. Latest issue September 1998	6220.0
■ Persons Who had Re-entered the Labour Force. Final issue July 1995 (Discontinued)	6264.0.40.001
■ Persons Who Have Left the Labour Force. Final issue September 1994 (Discontinued)	6267.0.40.001
■ Retirement and Retirement Intentions. Irregular. Latest issue November 1997	6238.0
■ Retrenchment and Redundancy. Irregular. Latest issue July 1997	6266.0
■ Successful and Unsuccessful Job Search Experience. Two-yearly. Latest issue July 1998	6245.0
■ Superannuation. Irregular. Latest issue November 1995	6319.0
■ Trade Union Members. Two-yearly. August 1996 (Discontinued)	6325.0
■ Transition from Education to Work. Annual. Irregular. Latest issue May 1998	6227.0
■ Underemployed Workers. Annual. Latest issue September 1997	6265.0
■ Working Arrangements. Irregular. Latest issue August 1997	6342.0

### FORTHCOMING SUPPLEMENTARY SURVEYS

Topic	Reference month	Release date
Underemployed Workers	September 1998	25 March 1999

### INQUIRIES

**Central Office:** 02 6252 6504

#### Regional Offices:

SYDNEY	02 9268 4212	ADELAIDE	08 8237 7365
MELBOURNE	03 9615 7677	HOBART	03 6222 5841
BRISBANE	07 3222 6068	DARWIN	08 8943 2150
PERTH	08 9360 5943	CANBERRA	02 6207 0283

## **WE'VE GOT THE ANSWERS ... WE JUST CAN'T FIT THEM ALL INTO THIS PUBLICATION!**

Is there more information you would like about this topic or other supplementary survey topics?

The good news is that the information is available. In fact, we have volumes of detailed information that cannot be placed into the publications but can be provided to you.

### **MEETING YOUR NEEDS WITH A CUSTOMISED APPROACH**

Detailed information from every supplementary survey is available — that's where we can help. Contact one of our consultants to discuss your needs. They will provide you with the best possible option to solve your data requests in a written quote, clearly setting out all the costs and time frames.

We can supply you with your requested information in a variety of formats to best suit your needs:

- printed tables
- spreadsheets in a range of formats compatible with your software package
- via email
- floppy disk

### **TAILORED TO YOUR SPECIFICATIONS**

We can mix and match from our extensive data holdings to give a complete statistical picture for your policy, planning, research and commercial analysis needs.

Take a look at the list of populations and data items on the previous pages. They contain a comprehensive list of the variables available from the Persons Not in the Labour Force Survey that you may be interested in exploring. These data items can be cross-classified to your exact requirements, offering you the best cost-effective solution. The cost will depend on what you selected and their degree of detail. Payment for this information may be made by credit card or by invoice.

### **MORE INFORMATION IS AVAILABLE**

Contact Tim Wardrop on Canberra 02 6252 7204 to talk about any inquiries you may have about the information from this survey or to order your special data requirements.

For information about the wider range of ABS data, see contact details on the back of the cover.



## SELF-HELP ACCESS TO STATISTICS

- DIAL-A-STATISTIC** For current and historical Consumer Price Index data, call 1902 981 074.  
For the latest figures for National Accounts, Balance of Payments, Labour Force, Average Weekly Earnings, Estimated Resident Population and the Consumer Price Index call 1900 986 400.  
These calls cost 75c per minute.
- INTERNET** [www.abs.gov.au](http://www.abs.gov.au)
- LIBRARY** A range of ABS publications is available from public and tertiary libraries Australia wide. Contact your nearest library to determine whether it has the ABS statistics you require.

## WHY NOT SUBSCRIBE?

- PHONE** +61 1300 366 323
- FAX** +61 3 9615 7848

## CONSULTANCY SERVICES

ABS offers consultancy services on a user pays basis to help you access published and unpublished data. Data that are already published and can be provided within 5 minutes is free of charge. Statistical methodological services are also available. Please contact:

City	By phone	By fax
Canberra	02 6252 6627	02 6207 0282
Sydney	02 9268 4611	02 9268 4668
Melbourne	03 9615 7755	03 9615 7798
Brisbane	07 3222 6351	07 3222 6283
Perth	08 9360 5140	08 9360 5955
Adelaide	08 8237 7400	08 8237 7566
Hobart	03 6222 5800	03 6222 5995
Darwin	08 8943 2111	08 8981 1218

- POST** Client Services, ABS, PO Box 10, Belconnen ACT 2616
- EMAIL** [client.services@abs.gov.au](mailto:client.services@abs.gov.au)



2622000009982  
ISSN 0819-9914

RRP \$19.00